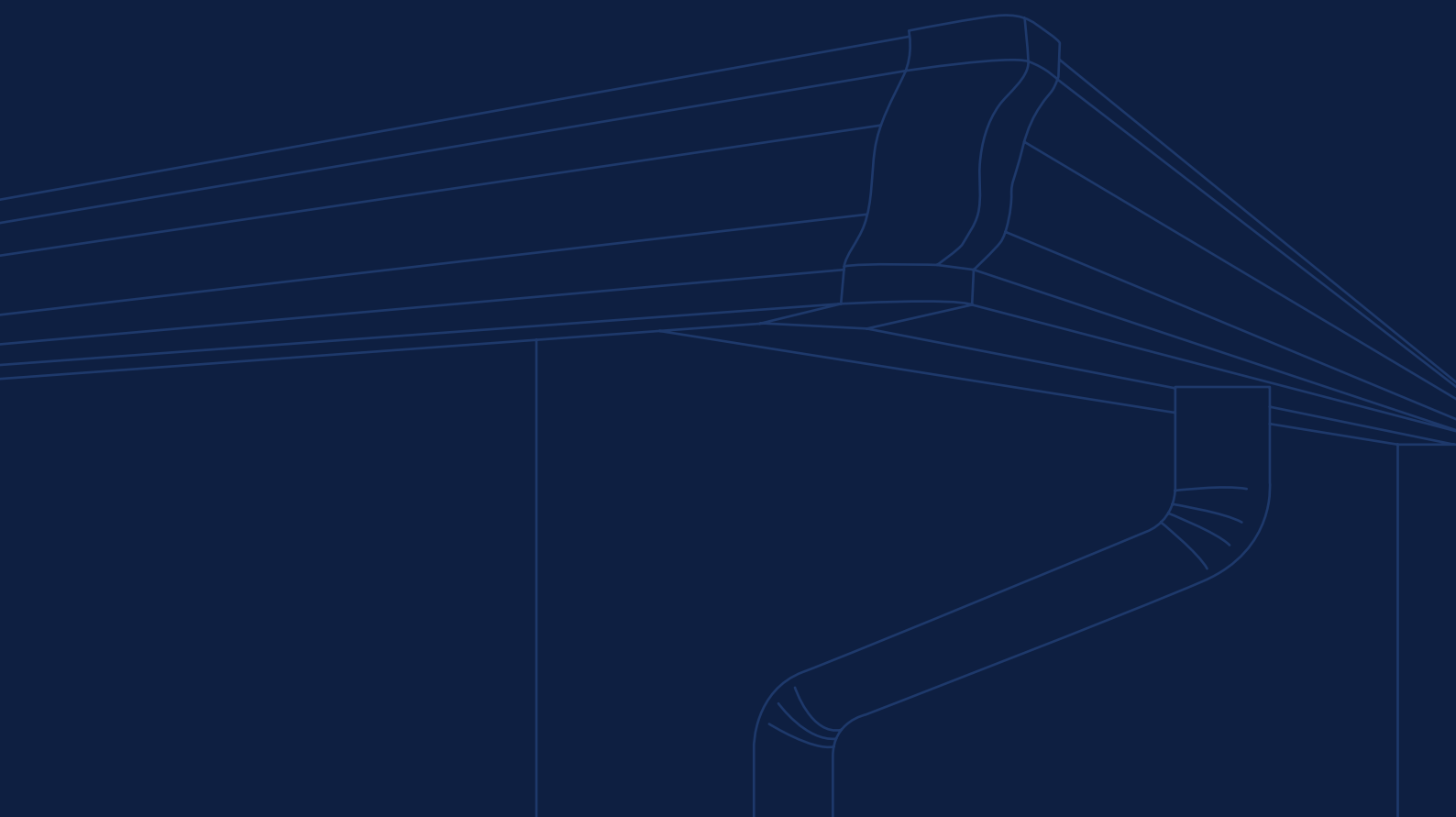




# CATALOGUE 2022





THE PATH OF WATER  
PASSES US BY



GET TO KNOW GUTTAL

# INDEX

## 01

04 - 23

- 05 PLAIN LACQUERED ALUMINIUM (PE)
- 06 DOWNPIPE (PE)
- 08 ELBOWS (PE)
- 16 ACCESSORIES (PE)

## 02

24 - 39

- 25 STRUCTURED LACQUERED ALUMINIUM (PA)
- 26 DOWNPIPE (PA)
- 27 ELBOWS (PA)
- 35 ACCESSORIES (PA)

## 03

40 - 45

- 41 ALUMINOX (AX)
- 42 DOWNPIPE (AX)
- 42 ELBOWS (AX)
- 44 HOPPER HEAD (AX)

## 04

46 - 51

- 47 WOOD ALUMINIUM (MD)
- 48 DOWNPIPE (MD)
- 48 ELBOWS (MD)
- 50 HOPPER HEAD (MD)

## 05

52 - 61

- 53 HARD ALUMINIUM ACCESSORIES
- 60 FIXING SYSTEMS

## 06

62-63

- 63 MALLEABLE ALUMINIUM

## 07

64 - 65

- 65 ALUMINIUM CHIMNEYS

## 08

66 - 69

- 67 SUSPENDED CEILINGS

## 09

70 - 73

- 71 FENCING

## 10

74 - 79

- 75 COPING CAP

## 11

80 - 87

- 81 ZINC
- 82 DOWNPIPE
- 84 ACCESSORIES
- 86 HOPPER HEAD

## 12

88 - 95

- 89 COPPER
- 90 DOWNPIPE
- 92 ACCESSORIES
- 94 HOPPER HEAD

## 13

96 - 99

- 97 STAINLESS STEEL
- 98 HOPPER HEAD

## 14

100 - 137

- 101 FASTENINGS
- 106 TOOLS

## 15

138 - 145

- 139 SEALANT CHEMICALS, ADHESIVES AND CONSUMABLES
- 144 SPRAYS

## 16

146 - 151


- 147 QUALITY POLICY
- 148 GENERAL SALES CONDITIONS

# PLAIN LACQUERED ALUMINIUM (PE)

## EQUIVALENCE TABLE

THICKNESS: 0,70 | 0,74 mm

DENSITY: 2,70 g/cm<sup>3</sup>



	270 mm	300 mm	325 mm	380 mm	500 mm	600   625 mm	1250 mm
0,70	0,510 Kg	0,567 Kg	0,614 Kg	0,718 Kg	0,945 Kg	1,134   1,181 Kg	2,362 Kg
0,74	0,539 kg	0,599 kg	0,649 kg	0,759 kg	0,999 kg	1,199   1,249 kg	2,498 kg

## HOW TO CALCULATE WEIGHT PER METRE

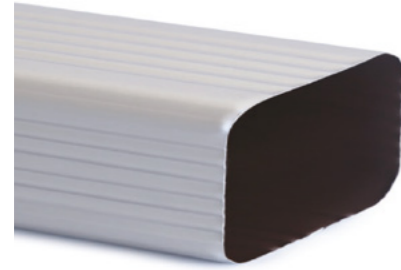
THICKNESS x WIDTH x DENSITY

ex: 0,74 mm x 300 mm x 2,7 g/cm<sup>3</sup>

LACQUERING

## POLYESTER

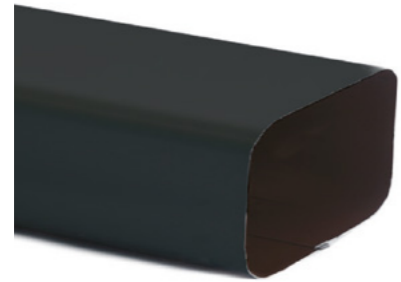
High quality aluminium in an alloy with hardness and finishing specially designed for guttering, roofing and facades. The main characteristics of the polyester (PE) paint are a primer base followed by a polyester lacquering, giving the aluminium good adherence, excellent flexibility, good physical and chemical resistance, guaranteeing the customer a high quality and durable product.



**DOWNPIPE 60 x 80 x 0.64 mm STRIPED**

QUANTITY PER BOX

30 m



**DOWNPIPE 60 x 80 x 0.64 mm PLAIN**

QUANTITY PER BOX

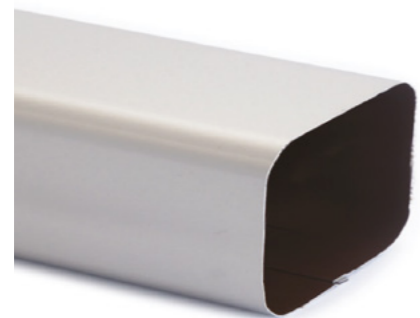
30 m



**DOWNPIPE 75 x 105 x 0.64 mm STRIPED**

QUANTITY PER BOX

30 m



**DOWNPIPE 75 x 105 x 0.64 mm PLAIN**

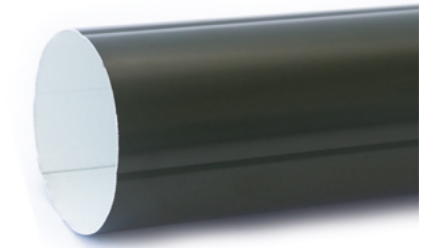
QUANTITY PER BOX

30 m

**DOWNPIPE ROUND MODEL 80 x 0,64 mm STRIPED**

QUANTITY PER BOX

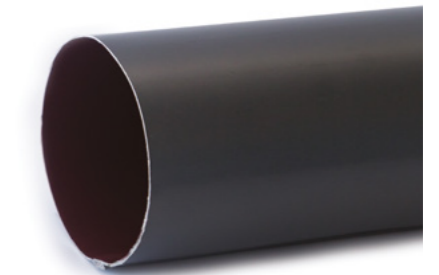
30 m



**DOWNPIPE ROUND MODEL 80 x 0,64 mm PLAIN**

QUANTITY PER BOX

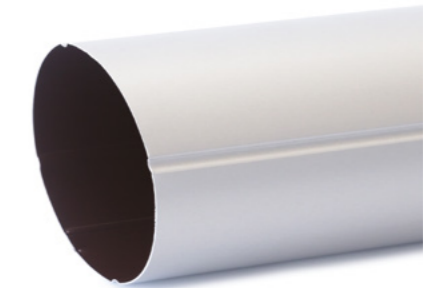
30 m



**DOWNPIPE ROUND MODEL 100 x 0,64 mm STRIPED**

QUANTITY PER BOX

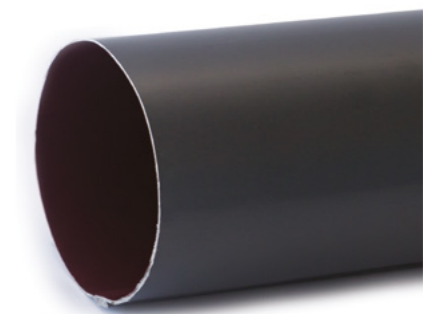
30 m



**DOWNPIPE ROUND MODEL 100 x 0,64 mm PLAIN**

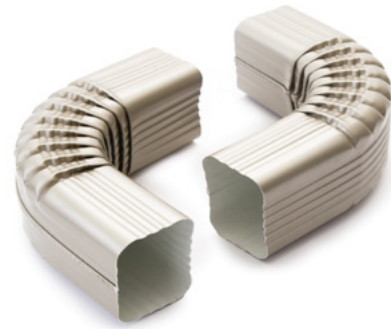
QUANTITY PER BOX

30 m



Sold in 3 metre lengths.

Sold in 3 metre lengths.



**FRONTAL ELBOW 60 x 80 x 0,64 mm - 70° / 88°  
(EXT. / INT.) STRIPED**

QUANTITY \_\_\_\_\_  
 unit \_\_\_\_\_  
 20 units box \_\_\_\_\_

**FRONTAL OFFSET ELBOW 60 x 80 x 0,64 mm STRIPED**

QUANTITY \_\_\_\_\_  
 unit \_\_\_\_\_



**LATERAL ELBOW 60 x 80 x 0,64 mm - 70° / 88° (LEFT / RIGHT)  
STRIPED**

QUANTITY \_\_\_\_\_  
 unit \_\_\_\_\_  
 20 units box \_\_\_\_\_

**LATERAL OFFSET ELBOW 60 x 80 x 0,64 mm (LEFT / RIGHT)  
STRIPED**

QUANTITY \_\_\_\_\_  
 unit \_\_\_\_\_



**FRONTAL ELBOW 60 x 80 x 0,64 mm 70° / 88°  
(EXT. / INT.) PLAIN**

QUANTITY \_\_\_\_\_  
 unit \_\_\_\_\_  
 20 units box \_\_\_\_\_

**FRONTAL OFFSET ELBOW 60 x 80 x 0,64 mm PLAIN**

QUANTITY \_\_\_\_\_  
 unit \_\_\_\_\_



**LATERAL ELBOW 60 x 80 x 0,64 mm 70° / 88° (LEFT / RIGHT)  
PLAIN**

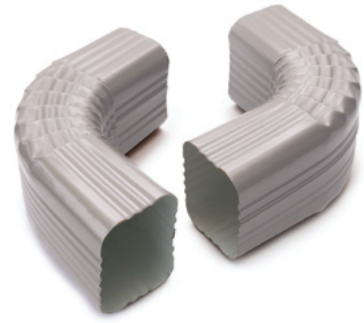
QUANTITY \_\_\_\_\_  
 unit \_\_\_\_\_  
 20 units box \_\_\_\_\_

**LATERAL OFFSET ELBOW 60 x 80 x 0,64 mm (LEFT / RIGHT)  
PLAIN**

QUANTITY \_\_\_\_\_  
 unit \_\_\_\_\_

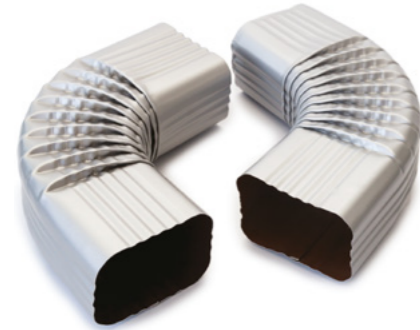


Maximum deviation 10 cm. Other dimensions on request.



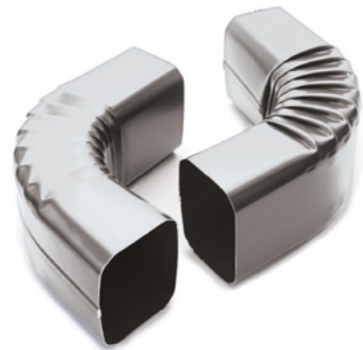
**FRONTAL ELBOW 75 x 105 x 0,64 mm - 70° / 88°  
(EXT. / INT.) STRIPED**

QUANTITY \_\_\_\_\_  
 unit \_\_\_\_\_  
 20 units box \_\_\_\_\_



**LATERAL ELBOW 75 x 105 x 0,64 mm - 70° / 88°  
(LEFT / RIGHT) STRIPED**

QUANTITY \_\_\_\_\_  
 unit \_\_\_\_\_  
 20 units box \_\_\_\_\_



**FRONTAL ELBOW 75 x 105 x 0,64 mm 70° / 88°  
(EXT. / INT.) PLAIN**

QUANTITY \_\_\_\_\_  
 unit \_\_\_\_\_  
 20 units box \_\_\_\_\_



**LATERAL ELBOW 75 x 105x 0,64 mm 70° / 88°  
(LEFT / RIGHT) PLAIN**

QUANTITY \_\_\_\_\_  
 unit \_\_\_\_\_  
 20 units box \_\_\_\_\_

**FRONTAL OFFSET ELBOW 75 x 105 x 0,64 mm STRIPED**

QUANTITY \_\_\_\_\_  
 unit \_\_\_\_\_



**LATERAL OFFSET ELBOW 75 x 105 x 0,64 mm (LEFT / RIGHT)  
STRIPED**

QUANTITY \_\_\_\_\_  
 unit \_\_\_\_\_



**FRONTAL OFFSET ELBOW 75 x 105 x 0,64 mm PLAIN**

QUANTITY \_\_\_\_\_  
 unit \_\_\_\_\_



**LATERAL OFFSET ELBOW 75 x 105 x 0,64 mm (LEFT / RIGHT)  
PLAIN**

QUANTITY \_\_\_\_\_  
 unit \_\_\_\_\_



Maximum deviation 10 cm. Other dimensions on request.



**ROUND MODEL ELBOW PLAIN / STRIPED - 70° / 88°  
(EXT. / INT.)**

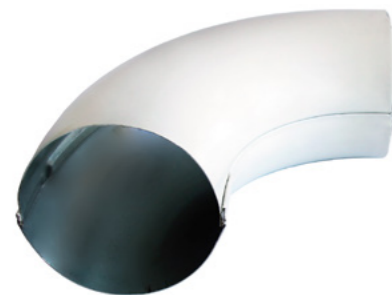
MODEL \_\_\_\_\_  
 D80 \_\_\_\_\_  
 D100 \_\_\_\_\_



**ROUND MODEL OFFSET ELBOW PLAIN / STRIPED**

MODEL \_\_\_\_\_  
 D80 \_\_\_\_\_  
 D100 \_\_\_\_\_

Maximum deviation 10 cm. Other dimensions on request.



**ROUND MODEL ELBOW STAPLED JOINT**

MODEL \_\_\_\_\_  
 D80 \_\_\_\_\_  
 D100 \_\_\_\_\_

**END CAP MODEL 300**

QUANTITY PER BOX \_\_\_\_\_  
 25 pairs \_\_\_\_\_



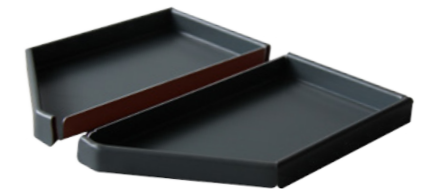
**END CAP MODEL 325**

QUANTITY PER BOX \_\_\_\_\_  
 25 pairs \_\_\_\_\_



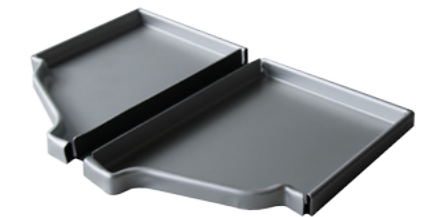
**END CAP MODEL 325 EVO**

QUANTITY PER BOX \_\_\_\_\_  
 20 pairs \_\_\_\_\_



**END CAP MODEL 380**

QUANTITY PER BOX \_\_\_\_\_  
 20 pairs \_\_\_\_\_



**END CAP MODEL 270 ROUND**

QUANTITY PER BOX \_\_\_\_\_  
 25 pairs \_\_\_\_\_







**END CAP MODEL SM 300 ROUND**

QUANTITY PER BOX

25 pairs



**MITER STRIP 90° MODEL 300 (EXT./INT.)**

QUANTITY PER BOX

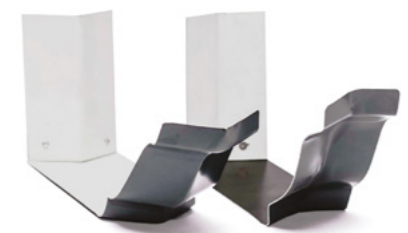
24 units



**MITER STRIP 135° MODEL 300 (EXT./INT.)**

QUANTITY PER BOX

24 units



**MITER STRIP 90° MODEL 325 (EXT./INT.)**

QUANTITY PER BOX

24 units

**MITER STRIP 90° MODEL 325 EVO (EXT./INT.)**

QUANTITY PER BOX

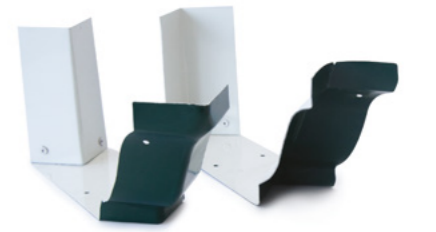
24 units



**MITER STRIP 90° MODEL 380 (EXT./INT.)**

QUANTITY PER BOX

24 units



**MITER STRIP 90° MODEL 270 ROUND (EXT./INT.)**

QUANTITY PER BOX

24 units



**MITER STRIP 90° MODEL SM 300 ROUND (EXT./INT.)**

QUANTITY PER BOX

24 units





**DOWNPIPE BRACKET 60 x 80 LACQUERED ALUMINIUM (PE)**

QUANTITY \_\_\_\_\_  
 200 units box \_\_\_\_\_



**DOWNPIPE BRACKET 60 x 80 RAW ALUMINIUM**

QUANTITY \_\_\_\_\_  
 200 units box \_\_\_\_\_



**DOWNPIPE BRACKET 75 x 105 LACQUERED ALUMINIUM**

QUANTITY \_\_\_\_\_  
 100 units box \_\_\_\_\_



**DOWNPIPE BRACKET 75 x 105 RAW ALUMINIUM**

QUANTITY \_\_\_\_\_  
 100 units box \_\_\_\_\_

**DOWNPIPE BRACKET (2 PIECES)**

QUANTITY \_\_\_\_\_  
 200 units box \_\_\_\_\_



**OUTLET 70 mm**

QUANTITY PER BOX \_\_\_\_\_  
 200 units \_\_\_\_\_



**OUTLET**

MODEL | QUANTITY PER BOX \_\_\_\_\_  
 63 mm | 200 un box \_\_\_\_\_  
 80 mm | 130 un box \_\_\_\_\_  
 90 mm | 100 un box \_\_\_\_\_  
 100 mm | 80 un box \_\_\_\_\_



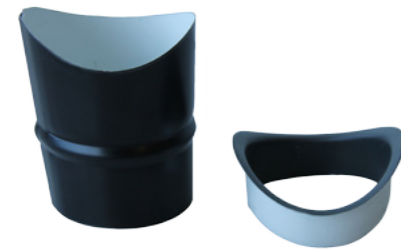


**RECTANGULAR OUTLET**

MODEL | QUANTITY PER BOX

60 x 80 mm | 200 un

75 x 105 mm | box 100 un



**OVAL OUTLET FOR ROUND MODEL**

MODEL

outlet 80 mm

outlet connection 80 mm

outlet 100 mm

outlet connection 100 mm



**UNIVERSAL OUTLET WITH OUTPUT**

MODEL

80 mm

100 mm

**ALUMINIUM CHAIN (METRE)**

FINISHING

raw

lacquered

SOLD BY THE METRE | THICKNESS OF THE LINK - 5mm DIAMETER

**AVAILABLE COLOURS**

White	Light Brown	Golden	Blue 5010
Beige 1015	Dark Brown	Ocher	Blue 5013
Beige 04	Grey 9006	Black 9005	Green 6005
Beige Rose	Grey 7011	Light Tile	Green 6009
Bordeaux	Grey 7016	Dark Tile	
Red 3001	Copper Old		

COLOUR PALETTE AT PAGE 23



**ALUMINIUM CONE**

QUANTITY

unit



**PROTECTION DOWNPIPE**

MODEL

for 60 x 80 downpipe

for 75 x 105 downpipe

Sold in 2 metre tubes.





**RECTANGULAR MODEL HOPPER HEAD WITH OVERFLOW**

MODEL \_\_\_\_\_

small \_\_\_\_\_

medium \_\_\_\_\_

big \_\_\_\_\_



**RECTANGULAR MODEL HOPPER HEAD**

MODEL \_\_\_\_\_

small \_\_\_\_\_

medium \_\_\_\_\_

big \_\_\_\_\_



**ROUND MODEL HOPPER HEAD**

MEASURE \_\_\_\_\_

23 x 18 x 13 cm \_\_\_\_\_

**MODEL EVO HOPPER HEAD**

MODEL \_\_\_\_\_

300 \_\_\_\_\_

380 \_\_\_\_\_



**MODEL EVO CONNECTION**

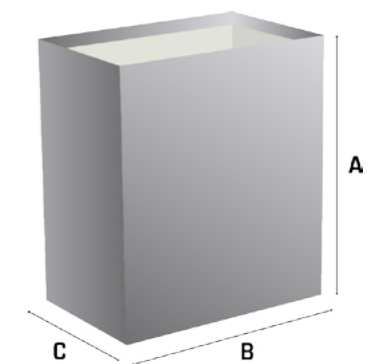
MEASURE \_\_\_\_\_

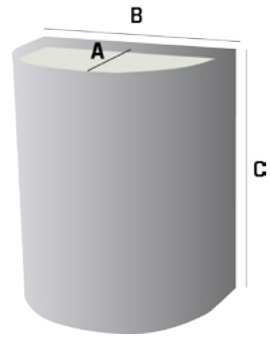
14 x 14 x 8,5 cm \_\_\_\_\_



**MEASURES**

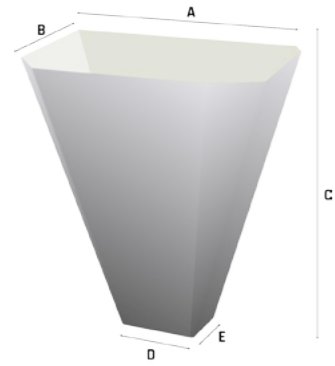
MEASURES	A	B	C
small	17 cm	15,5 cm	10 cm
medium	23 cm	20 cm	13,5 cm
big	33 cm	30 cm	15 cm





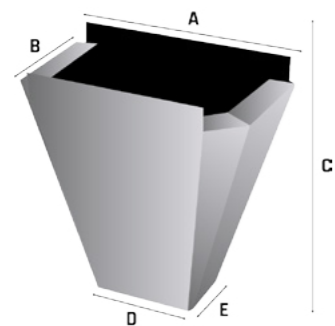
MEASURES

A	B	C
13 cm	18 cm	23 cm



MODEL

MODEL	A	B	C	D	E
300	20 cm	11,5 cm	23 cm	6,5 cm	4,5 cm
380	23 cm	14 cm	24 cm	9 cm	6,5 cm



A	B	C	D	E
14 cm	8,5 cm	14 cm	6,5 cm	4,5 cm

COLOUR PALETTE (PE)



# STRUCTURED LACQUERED ALUMINIUM (PA)

## EQUIVALENCE TABLE

THICKNESS: 0,70 | 1 mm

DENSITY: 2,70 g/cm<sup>3</sup>

	300 mm	325 mm	380 mm	410 mm	625 mm	1250 mm
1 m						
0,70	0,567 Kg	0,614 Kg	0,718 Kg	----	1,181 Kg	2,363 Kg
1,00	----	----	----	1,107 Kg	1,654 Kg	3,375 Kg

## HOW TO CALCULATE WEIGHT PER METRE

THICKNESS x WIDTH x DENSITY

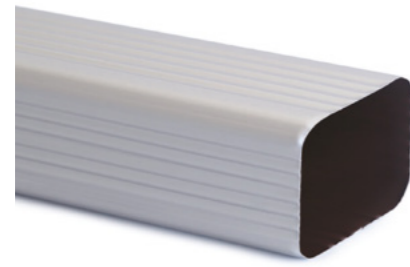
ex: 0.70 mm x 300 mm x 2,7 g/cm<sup>3</sup>

If the desired size is out of stock, it may be supplied by cutting the next size plus the price of the cutting service.

## LACQUERING

### POLYAMIDE

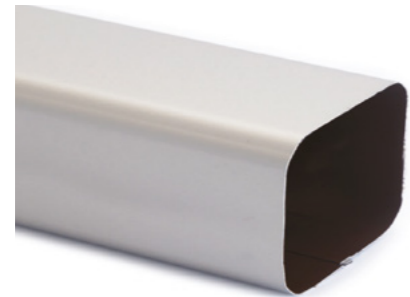
The main characteristics of polyamide paint (PA) are a protective primer base followed by a polyamide lacquering which provides excellent adherence and a strong reinforced structure for the material. This component results in a textured lacquer with greater flexibility and excellent physical, chemical and abrasion resistance, while at the same time obtaining a product that repels the accumulation of dirt. It is a paint that offers customers an extra guarantee of high resistance and durability.



**DOWNPIPE 60 x 80 x 0,64 mm PLAIN / STRIPED**

QUANTITY PER BOX

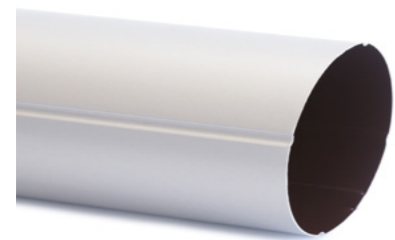
30 meters



**DOWNPIPE 75 x 105 x 0,64 mm PLAIN / STRIPED**

QUANTITY PER BOX

30 meters



**DOWNPIPE ROUND MODEL 80 x 0,64 mm PLAIN / STRIPED**

QUANTITY PER BOX

30 meters



**DOWNPIPE ROUND MODEL 100 x 0,64 mm PLAIN / STRIPED**

QUANTITY PER BOX

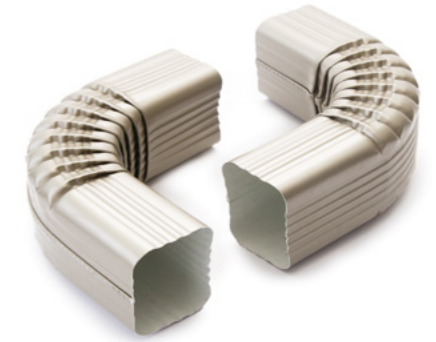
30 meters

**FRONTAL ELBOW 60 x 80 x 0,64 mm - 70° / 88°  
(EXT. / INT.) STRIPED**

QUANTITY

unit

20 units box



**LATERAL ELBOW 60 x 80 x 0,64 mm - 70° / 88°  
(LEFT / RIGHT) STRIPED**

QUANTITY

unit

20 units box



**FRONTAL ELBOW 60 x 80 x 0,64 mm 70° / 88°  
(EXT. / INT.) PLAIN**

QUANTITY

unit

20 units box



**LATERAL ELBOW 60 x 80 x 0,64 mm 70° / 88°  
(LEFT / RIGHT) PLAIN**

QUANTITY

unit

20 units box





**FRONTAL OFFSET ELBOW 60 x 80 x 0,64 mm STRIPED**

QUANTITY \_\_\_\_\_  
 unit \_\_\_\_\_



**LATERAL OFFSET ELBOW 60 x 80 x 0,64 mm (LEFT / RIGHT) STRIPED**

QUANTITY \_\_\_\_\_  
 unit \_\_\_\_\_



**FRONTAL OFFSET ELBOW 60 x 80 x 0,64 mm PLAIN**

QUANTITY \_\_\_\_\_  
 unit \_\_\_\_\_

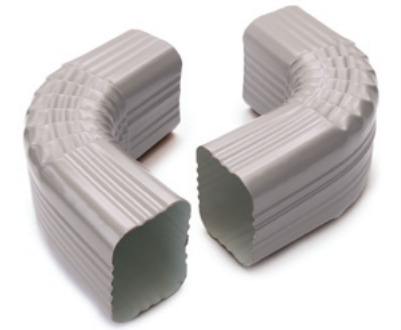


**LATERAL OFFSET ELBOW 60 x 80 x 0,64 mm (LEFT / RIGHT) PLAIN**

QUANTITY \_\_\_\_\_  
 unit \_\_\_\_\_

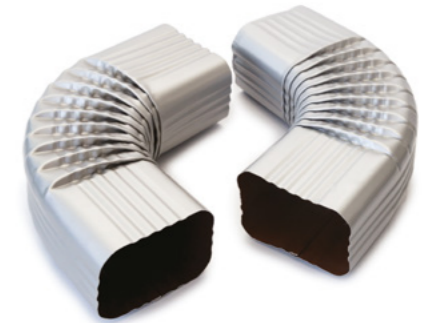
**FRONTAL ELBOW 75 x 105 x 0,64 mm - 70° / 88° (EXT. / INT.) STRIPED**

QUANTITY \_\_\_\_\_  
 unit \_\_\_\_\_  
 20 units box \_\_\_\_\_



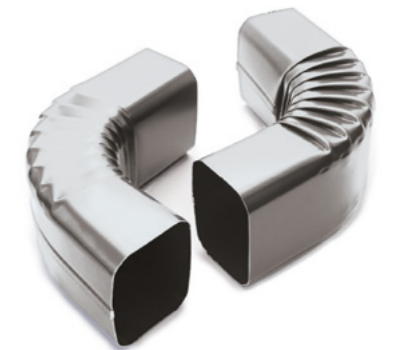
**LATERAL ELBOW 75 x 105 x 0,64 mm - 70° / 88° (LEFT / RIGHT) STRIPED**

QUANTITY \_\_\_\_\_  
 unit \_\_\_\_\_  
 20 units box \_\_\_\_\_



**FRONTAL ELBOW 75 x 105 x 0,64 mm 70° / 88° (EXT. / INT.) PLAIN**

QUANTITY \_\_\_\_\_  
 unit \_\_\_\_\_  
 20 units box \_\_\_\_\_



**LATERAL ELBOW 75 x 105 x 0,64 mm 70° / 88° (LEFT / RIGHT) PLAIN**

QUANTITY \_\_\_\_\_  
 unit \_\_\_\_\_  
 20 units box \_\_\_\_\_



Maximum deviation 10 cm. Other dimensions on request.





**FRONTAL OFFSET ELBOW 75 x 105 x 0,64 mm STRIPED**

QUANTITY \_\_\_\_\_  
 unit \_\_\_\_\_



**LATERAL OFFSET ELBOW 75 x 105 x 0,64 mm (LEFT / RIGHT) STRIPED**

QUANTITY \_\_\_\_\_  
 unit \_\_\_\_\_



**FRONTAL OFFSET ELBOW 75 x 105 x 0,64 mm PLAIN**

QUANTITY \_\_\_\_\_  
 unit \_\_\_\_\_



**LATERAL OFFSET ELBOW 75 x 105 x 0,64 mm (LEFT / RIGHT) PLAIN**

QUANTITY \_\_\_\_\_  
 unit \_\_\_\_\_

Maximum deviation 10 cm. Other dimensions on request.

**ROUND MODEL ELBOW PLAIN / STRIPED - 70° / 88° (EXT. / INT.)**

MODEL \_\_\_\_\_  
 D80 \_\_\_\_\_  
 D100 \_\_\_\_\_



**ROUND MODEL OFFSET ELBOW PLAIN / STRIPED**

MODEL \_\_\_\_\_  
 D80 \_\_\_\_\_  
 D100 \_\_\_\_\_



Maximum deviation 10 cm. Other dimensions on request.

**MODEL ROUND ELBOW STAPLED JOINT**

MODEL \_\_\_\_\_  
 D80 \_\_\_\_\_  
 D100 \_\_\_\_\_





**MODEL 300 END CAP**

QUANTITY \_\_\_\_\_  
25 pairs box \_\_\_\_\_



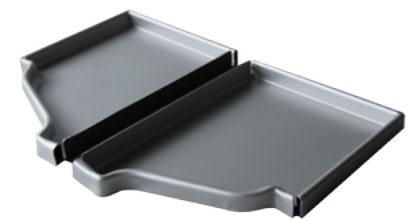
**MODEL 325 END CAP**

QUANTITY \_\_\_\_\_  
25 pairs box \_\_\_\_\_



**MODEL 325 EVO END CAP**

QUANTITY \_\_\_\_\_  
20 pairs box \_\_\_\_\_



**MODEL 380 END CAP**

QUANTITY \_\_\_\_\_  
20 pairs box \_\_\_\_\_



**MODEL 270 ROUND END CAP**

QUANTITY \_\_\_\_\_  
25 pairs box \_\_\_\_\_

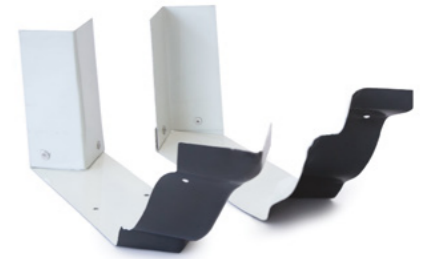
**MODEL SM 300 ROUND END CAP**

QUANTITY \_\_\_\_\_  
25 pairs box \_\_\_\_\_



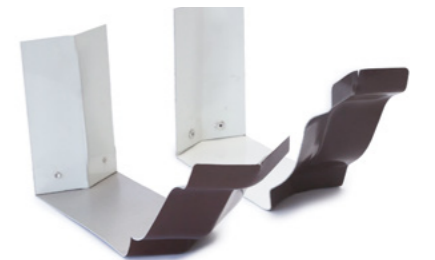
**MITER STRIP 90° MODEL 300 (EXT./INT.)**

QUANTITY \_\_\_\_\_  
24 units box \_\_\_\_\_



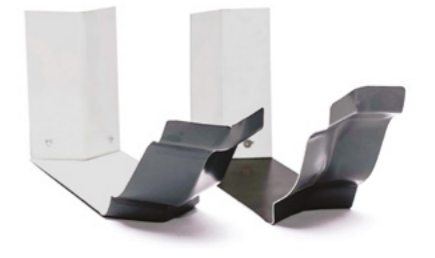
**MITER STRIP 135° MODEL 300 (EXT./INT.)**

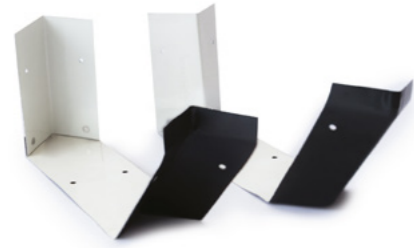
QUANTITY \_\_\_\_\_  
24 units box \_\_\_\_\_



**MITER STRIP 90° MODEL 325 (EXT./INT.)**

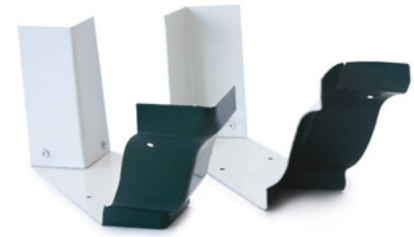
QUANTITY \_\_\_\_\_  
24 units box \_\_\_\_\_





**MITER STRIP 90° MODEL 325 EVO (EXT./INT.)**

QUANTITY \_\_\_\_\_  
 24 units box \_\_\_\_\_



**MITER STRIP 90° MODEL 380 (EXT./INT.)**

QUANTITY \_\_\_\_\_  
 24 units box \_\_\_\_\_



**MITER STRIP 90° MODEL 270 ROUND (EXT./INT.)**

QUANTITY \_\_\_\_\_  
 24 units box \_\_\_\_\_



**MITER STRIP 90° MODEL SM 300 ROUND (EXT./INT.)**

QUANTITY \_\_\_\_\_  
 24 units box \_\_\_\_\_

**DOWNPIPE BRACKET 60 x 80 LACQUERED ALUMINIUM 1,5**

QUANTITY PER BOX \_\_\_\_\_  
 200 units \_\_\_\_\_  
 Available in Sablé 100 and Sablé 200.



**DOWNPIPE BRACKET 75 x 105 LACQUERED ALUMINIUM**

QUANTITY PER BOX \_\_\_\_\_  
 100 units \_\_\_\_\_  
 Available in Sablé 100 and Sablé 200.



**DOWNPIPE BRACKET (2 PIECES)**

QUANTITY \_\_\_\_\_  
 200 units box \_\_\_\_\_



**UNIVERSAL OUTLET WITH OUTPUT**

MODEL \_\_\_\_\_  
 80 mm \_\_\_\_\_  
 100 mm \_\_\_\_\_





**ALUMINIUM CONE**

QUANTITY

unit

**ROUND MODEL HOPPER HEAD**

MEASURE

23 x 18 x 13 cm



**RECTANGULAR MODEL HOPPER HEAD**

MODEL

small

medium

big

**MODEL EVO HOPPER HEAD**

MODEL

300

380



**RECTANGULAR MODEL HOPPER HEAD WITH OVERFLOW**

MODEL

small

medium

big

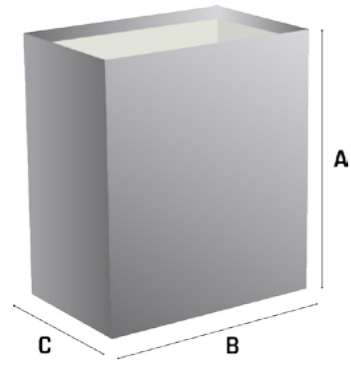
**MODEL EVO CONNECTION**

MEASURE

14 x 14 x 8,5 cm

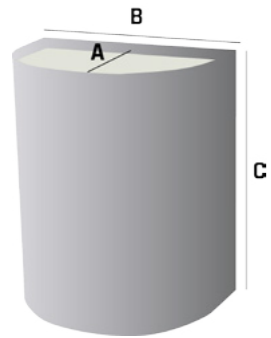


MEASURES



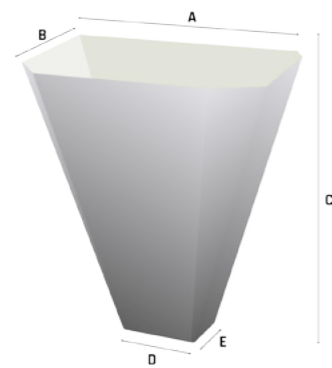
RECTANGULAR MODEL HOPPER HEAD WITH / WITHOUT OVERFLOW

MEASURES	A	B	C
small	17 cm	15,5 cm	10 cm
medium	23 cm	20 cm	13,5 cm
big	33 cm	30 cm	15 cm



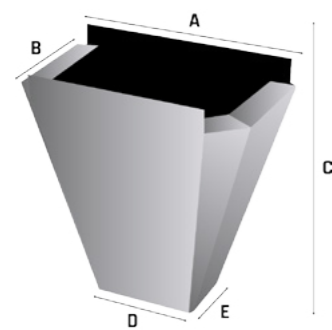
ROUND MODEL HOPPER HEAD

MEASURES	A	B	C
	13 cm	18 cm	23 cm



MODEL EVO HOPPER HEAD

MODEL	A	B	C	D	E
300	20 cm	11,5 cm	23 cm	6,5 cm	4,5 cm
380	23 cm	14 cm	24 cm	9 cm	6,5 cm



MODEL EVO CONNECTION

A	B	C	D	E
14 cm	8,5 cm	14 cm	6,5 cm	4,5 cm

COLOUR PALETTE (PA)






- DARK BROWN
- TILE
- COPPER
- BEIGE 1015
- WHITE
- GREY 7035
- GREY 7036
- GREY 9006
- GREY 7011
- GREY 7016
- SABLÉ 100
- SABLÉ 200
- SABLÉ 2900
- BLACK 9005

# ALUMINOX

## EQUIVALENCE TABLE

THICKNESS: 0,74 mm

DENSITY: 2,70 g/cm<sup>3</sup>

1 m			
	270 mm	300 mm	1250 mm
0,74	0,539 Kg	0,599 Kg	2,498 Kg

OTHER WIDTHS AVAILABLE ON REQUEST

## HOW TO CALCULATE WEIGHT PER METRE

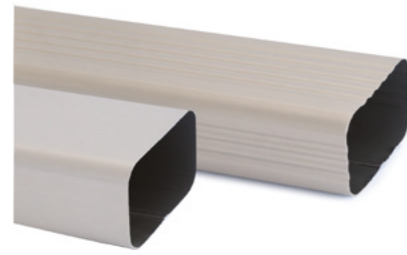
THICKNESS x WIDTH x DENSITY

ex: 0.74 mm x 300 mm x 2,7 g/cm<sup>3</sup>

LACQUERING

## SPECIAL POLYESTER

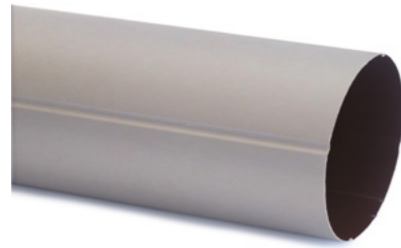
High-quality aluminium in an alloy with a hardness and finish specially designed for guttering, roofing and facades. The painting, based on polyester resins (PE) and special pigments, is preceded by a special treatment that gives it unique visual characteristics. In addition to the main characteristics of good adhesion, excellent flexibility and good physical and chemical resistance, the product has the metallic appearance of stainless steel in two different shades (Inox and Champagne).



**DOWNPIPE 60x80x0,64 mm / 75x105x0,64 mm PLAIN / STRIPED**

QUANTITY PER BOX

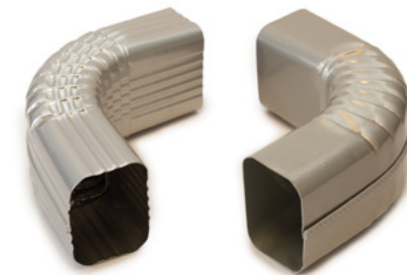
30 meters



**DOWNPIPE ROUND 80x0,64 mm / 100x0,64 mm PLAIN / STRIPED**

QUANTITY PER BOX

30 meters

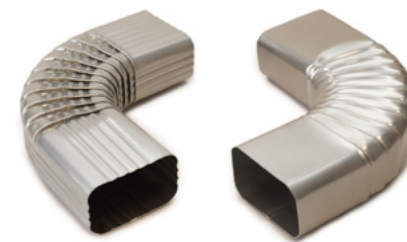


**FRONTAL ELBOW PLAIN / STRIPED 70 ° / 88 ° (EXT. / INT.)**

MEASURE

60 x 80

75 x 105



**LATERAL ELBOW PLAIN / STRIPED 70 ° / 88 ° (LEFT / RIGHT)**

MEASURE

60 x 80

75 x 105

**ROUND MODEL ELBOW PLAIN / STRIPED 70 ° / 88 ° (EXT. / INT.)**

MODEL

80 mm

100 mm



**END CAP FOR GUTTERS**

MODEL | QUANTITY PER BOX

300 | 25 pairs box

325 | 25 pairs box

380 | 20 pairs box

evo | 20 pairs box

round 270 | 25 pairs box

round 300 SM | 25 pairs box



**MITER STRIP (EXT. / INT.)**

MODEL | QUANTITY PER BOX

300 (90°) | 24 units box

300 (135°) | 24 units box

325 (90°) | 24 units box

380 (90°) | 24 units box

evo (90°) | 24 units box

round 270 (90°) | 24 units box

round 300 SM (90°) | 24 units box





**RECTANGULAR MODEL HOPPER HEAD**

MODEL
small
medium
big

**RECTANGULAR MODEL HOPPER HEAD WITH OVERFLOW**

MODEL
small
medium
big

**ROUND MODEL HOPPER HEAD**

MEASURE
23 x 18 x 13 cm

**MODEL EVO HOPPER HEAD**

MODEL
300
380

**MODEL EVO CONNECTION**

MEASURE
14 x 14 x 8,5 cm

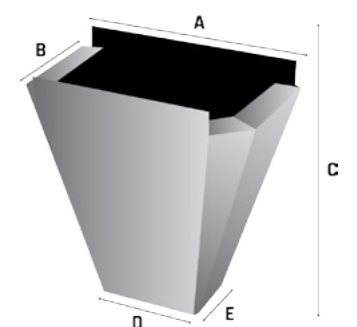
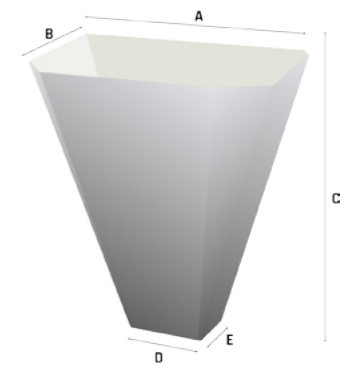
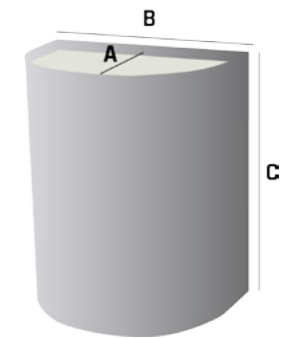
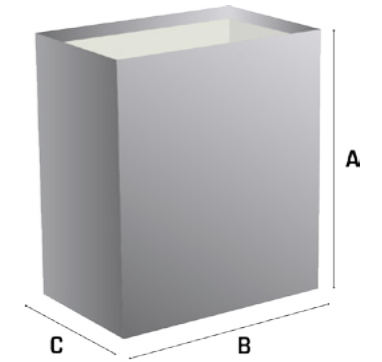
**MEASURES**

MEASURES	A	B	C
small	17 cm	15,5 cm	10 cm
medium	23 cm	20 cm	13,5 cm
big	33 cm	30 cm	15 cm

MEASURES		
A	B	C
13 cm	18 cm	23 cm

MODEL	A	B	C	D	E
300	20 cm	11,5 cm	23 cm	6,5 cm	4,5 cm
380	23 cm	14 cm	24 cm	9 cm	6,5 cm

A	B	C	D	E
14 cm	8,5 cm	14 cm	6,5 cm	4,5 cm





# WOOD ALUMINIUM

## EQUIVALENCE TABLE

THICKNESS: 0,70 mm  
DENSITY: 2,70 g/cm<sup>3</sup>



OTHER WIDTHS AVAILABLE ON REQUEST

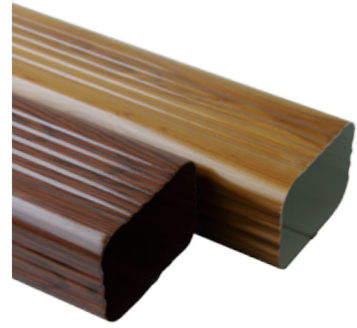
## HOW TO CALCULATE WEIGHT PER METRE

THICKNESS x WIDTH x DENSITY  
ex: 0.70 mm x 300 mm x 2,7 g/cm<sup>3</sup>

## LACQUERING

### SPECIAL POLYAMIDE

High-quality aluminium in an alloy with a hardness and finish specially designed for guttering, roofing and facades. The paint, which is based on polyamide resins (PA) and is applied through a multi-step painting process using special rollers, gives the product a very realistic natural wood appearance and is available in two colour variants (Nogal and Dark Wood). Its main features are excellent adhesion and a strong lacquer structure that is reinforced by the use of polyamide. It is a paint with a textured appearance, great flexibility and excellent physical, chemical and abrasion resistance that also prevents the accumulation of dirt.



**DOWNPIPE 60x80x0,64mm / 75x105x0,64mm  
PLAIN / STRIPED**

QUANTITY PER BOX

30 meters



**DOWNPIPE ROUND 80x0,64 mm / 100x0,64 mm  
PLAIN / STRIPED**

QUANTITY PER BOX

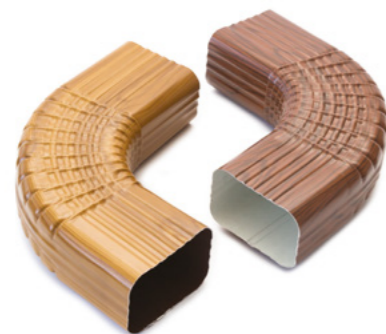
30 meters



**FRONTAL ELBOW 60x80 / 75x105 PLAIN / STRIPED  
70 ° / 88 ° (EXT. / INT.)**

QUANTITY

unit



**LATERAL ELBOW 60x80 / 75x105 PLAIN / STRIPED  
70 ° / 88 ° (LEFT / RIGHT)**

QUANTITY

unit

**ROUND MODEL ELBOW 80 mm / 100 mm PLAIN / STRIPED  
70 ° / 88 ° (EXT. / INT.)**

QUANTITY

unit



**END CAP FOR GUTTERS**

MODEL | QUANTITY PER BOX

300 | 25 pairs

325 | 25 pairs

380 | 20 pairs

evo | 20 pairs

270 | 25 pairs

300 SM | 25 pairs



**MITER STRIP 90 ° / 135 ° (EXT. / INT.)**

MODEL | QUANTITY PER BOX

300 (90°) | 24 units box

300 (135°) | 24 units box

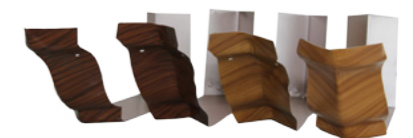
325 (90°) | 24 units box

380 (90°) | 24 units box

evo (90°) | 24 units box

round 270 (90°) | 24 units box

round 300 SM (90°) | 24 units box





**RECTANGULAR MODEL HOPPER HEAD**

MODEL
small
medium
big



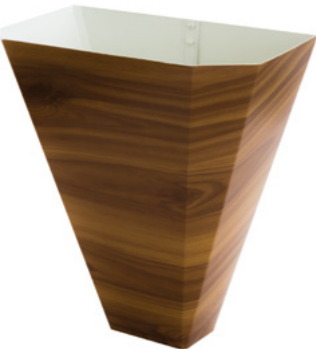
**RECTANGULAR MODEL HOPPER HEAD WITH OVERFLOW**

MODEL
small
medium
big



**ROUND MODEL HOPPER HEAD**

MEASURE
23 x 18 x 13 cm



**MODEL EVO HOPPER HEAD**

MODEL
300
380



**MODEL EVO CONNECTION**

MEASURE
14 x 14 x 8,5 cm

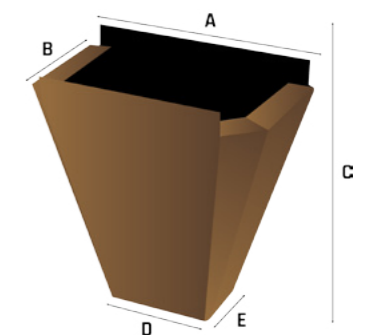
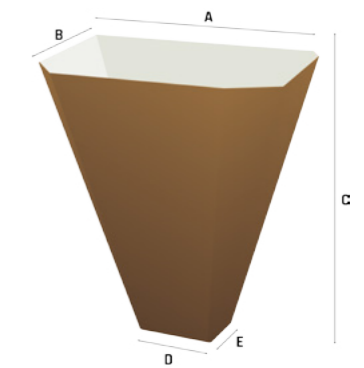
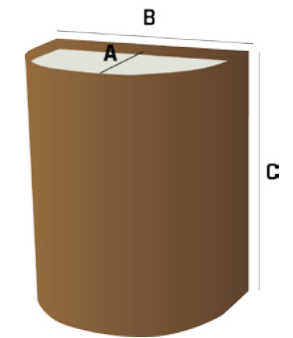
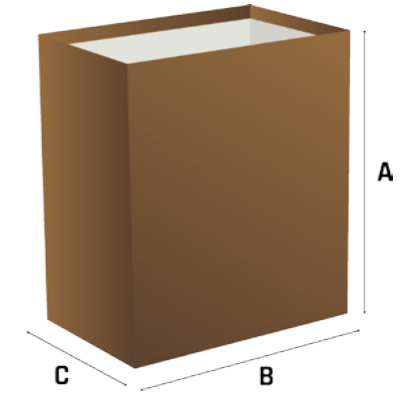
**MEASURES**

MEASURES	A	B	C
small	17 cm	15,5 cm	10 cm
medium	23 cm	20 cm	13,5 cm
big	33 cm	30 cm	15 cm

MEASURES	A	B	C
	13 cm	18 cm	23 cm

MODEL	A	B	C	D	E
300	20 cm	11,5 cm	23 cm	6,5 cm	4,5 cm
380	23 cm	14 cm	24 cm	9 cm	6,5 cm

A	B	C	D	E
14 cm	8,5 cm	14 cm	6,5 cm	4,5 cm



# ACCESSORIES | HARD ALUMINIUM

## GUTTER HANGER MOD. 300 (HARD ALUMINIUM 2 mm) NORTH/SOUTH

QUANTITY

500 units box



## GUTTER HANGER MOD. 325 | MOD. 380 (HARD ALUMINIUM 2 mm)

QUANTITY

350 units box



## GUTTER HANGER MOD. 300 FOR LIP (HARD ALUMINIUM 2 mm)

QUANTITY

150 units box



## GUTTER HANGER MOD. 325 | MOD. 380 FOR LIP (HARD ALUMINIUM 2 mm)

QUANTITY

150 units box





**CLAMP TILE 10 mm NORMAL MODEL/ SHORT TAB  
(ALUMINIUM 3 mm)**

QUANTITY \_\_\_\_\_

300 units box



**CLAMP TILE 15 mm NORMAL MODEL/ SHORT TAB  
(ALUMINIUM 3 mm)**

QUANTITY \_\_\_\_\_

300 units box



**CLAMP TILE 20 mm NORMAL MODEL/ SHORT TAB  
(ALUMINIUM 3 mm)**

QUANTITY \_\_\_\_\_

300 units box



**CLAMP TILE 25 mm NORMAL MODEL/ SHORT TAB  
(ALUMINIUM 3 mm)**

QUANTITY \_\_\_\_\_

250 units box

**CLAMP TILE 32 mm NORMAL MODEL/ SHORT TAB  
(ALUMINIUM 3 mm)**

QUANTITY \_\_\_\_\_

200 units box



**CLAMP TILE 40 mm NORMAL MODEL/ SHORT TAB  
(ALUMINIUM 3 mm)**

QUANTITY \_\_\_\_\_

200 units box



**CLAMP TILE 50 mm NORMAL MODEL/ SHORT TAB  
(ALUMINIUM 3 mm)**

QUANTITY \_\_\_\_\_

200 units box



**CLAMP TILE 60 mm NORMAL MODEL/ SHORT TAB  
(ALUMINIUM 3 mm)**

QUANTITY \_\_\_\_\_

200 units box





**CORNICE CLAMP LIP ROD INCLUDED**

MEASURE | QUANTITY

15 cm | 150 units box

20 cm | 150 units box

25 cm | 150 units box

30 cm | 150 units box

Sold unassembled.



**CORNICE CLAMP TOP HOLE STAINLESS STEEL (TAB 95 mm)**

MEASURE | QUANTITY

15 cm | 150 units box

20 cm | 150 units box

25 cm | 150 units box

30 cm | 150 units box



**CORNICE CLAMP SIDE HOLE STAINLESS STEEL (TAB 95 mm)**

MEASURE | QUANTITY

15 cm | 150 units box

20 cm | 150 units box

25 cm | 150 units box

30 cm | 150 units box

**ROUND MODEL CORNICE CLAMP TOP HOLE STAINLESS STEEL (TAB 75 mm)**

MEASURE | QUANTITY

15 cm | 150 units box

20 cm | 150 units box

25 cm | 150 units box

30 cm | 150 units box



**TAB CORNICE TOP HOLE STAINLESS STEEL (95 mm)**

QUANTITY

250 units box



**CORNICE TAB SIDE HOLE EM STAINLESS STEEL (95 mm)**

QUANTITY

250 units box



**SHORT MODEL CORNICE TAB TOP HOLE STAINLESS STEEL (75 mm)**

QUANTITY

box 250 units





**CORNICE CLAMP (SNOW CLAMP)**

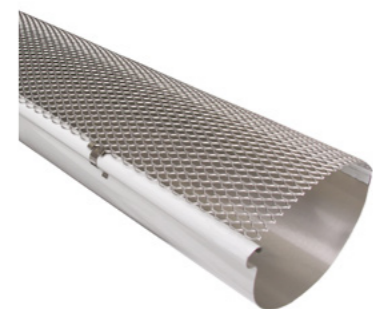
QUANTITY

150 units box



**STAINLESS STEEL ROD (8 mm)**

Sold in 4,10 m rods. Possibility of buying cut to size.



**ALUMINIUM GUTTER GUARD**

QUANTITY

metre | 13,5 cm

Net width 13 cm, sold by the metre in minimum quantity of 2 linear meters. Other widths available upon request.

m2

Sold in 5,5 m rolls

# CLAMP TILE FOR LIP



**NEW PRODUCT LAUNCH**

- APPLICATION REQUIREMENT: PROFILING MACHINE WITH LIP
- ADVANTAGE: QUICK ASSEMBLY

MEASURES

15 mm

20 mm

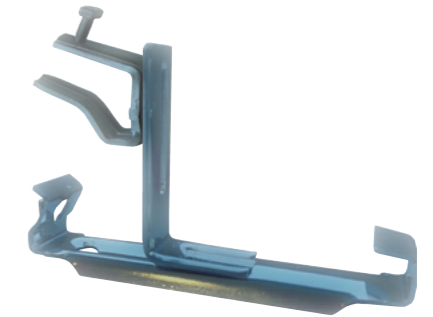
32 mm

40 mm

50 mm

60 mm

Clamp made up of three pieces sold separately

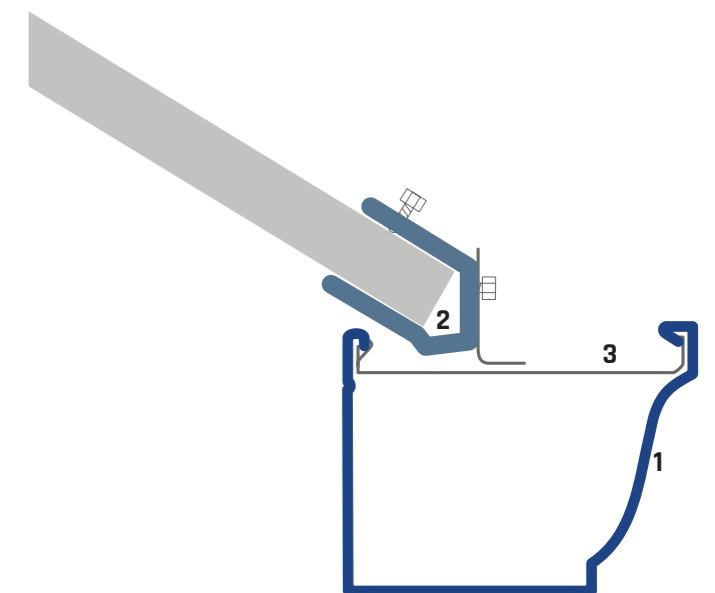


**FIXING SYSTEM CLAMP TILE FOR LIP**

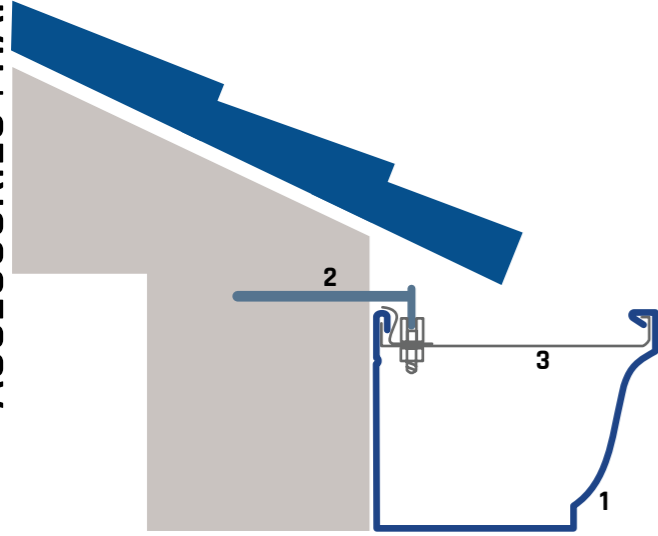
1 GUTTER

2 CLAMP TILE FOR LIP

3 LIP SPACER

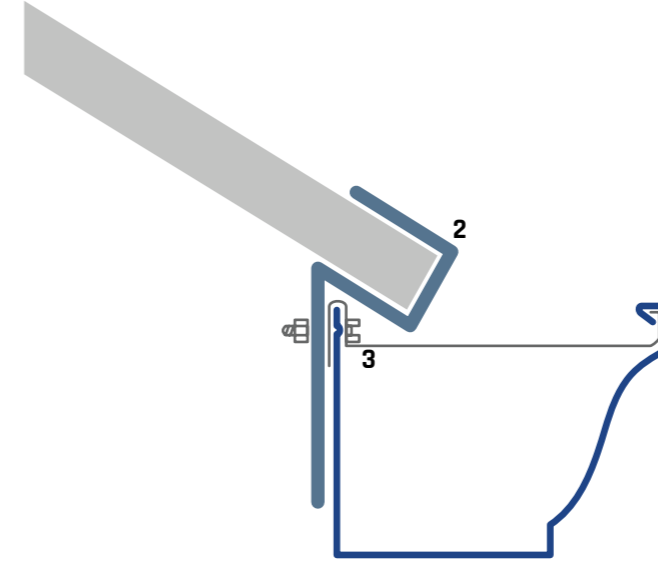


# FIXING SYSTEMS



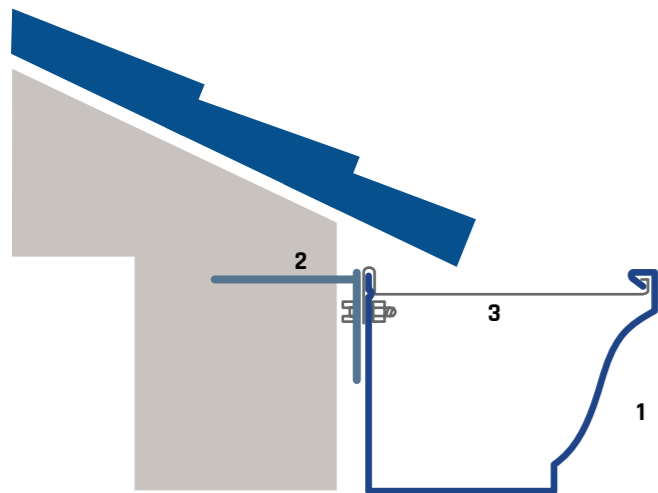
## FIXING SYSTEM CORNICE CLAMP FOR LIP WITH LIP SPACER

- 1 GUTTER
- 2 CORNICE CLAMP FOR LIP
- 3 LIP SPACER



## FIXING SYSTEMS CLAMP TILE WITH SPACER

- 1 GUTTER
- 2 CLAMP TILE
- 3 SPACER



## FIXING SYSTEM CORNICE CLAMP WITH SPACER 90 mm TOP HOLE OR 75 mm SIDE HOLE

- 1 GUTTER
- 2 CORNICE CLAMP
- 3 SPACER



### DEGREASED AND POLISHED PARTS

In order to provide the best service to our customers, we became pioneers in degreasing and polishing all our hard aluminium and stainless steel parts in order to enable an application without grease or nicks.



# MALLEABLE LACQUERED PLAIN ALUMINIUM

## EQUIVALENCE TABLE

THICKNESS: 0,70 mm

DENSITY: 2,70 g/cm<sup>3</sup>



## AVAILABLE COLORS

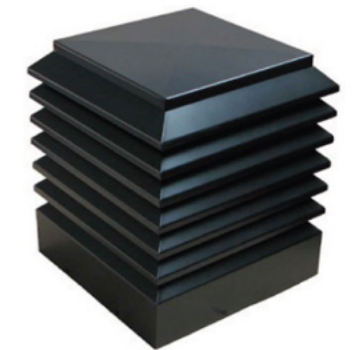
Availability of colours in stock to be confirmed with your sales representative.



# ALUMINIUM CHIMNEYS

## ALUMINIUM ASPIRATION CHIMNEY 2 mm ELECTROWELDED AND THERMO-WELDED

- HEIGHT OUTSIDE: 47 cm
- N ° BLADES: 7
- ANTI-RAINWATER ENTRY SYSTEM
- EASY INSTALLATION
- INNOVATIVE AND MODERN DESIGN
- MANUFACTURED TO MEASURE
- PROVEN RESISTANCE (ROBOTISED WELDING)
- 10-YEAR GUARANTEE
- CERTIFIED PRODUCT

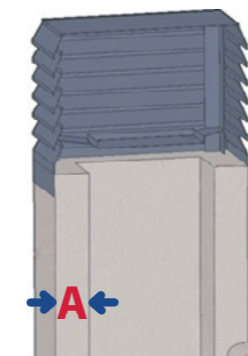


## ALUMINIUM FINISH CHIMNEY 2 mm ELECTROWELDED AND THERMO-WELDED

- HEIGHT OUTSIDE: 39 cm
- N ° BLADES: 5
- EASY INSTALLATION
- INNOVATIVE AND MODERN DESIGN
- MANUFACTURED TO MEASURE
- PROVEN RESISTANCE (ROBOTISED WELDING)
- 10-YEAR GUARANTEE
- CERTIFIED PRODUCT

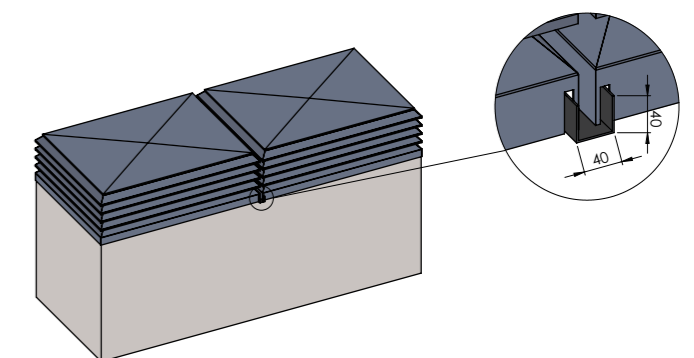


## TECHNICAL INFORMATION ON ASSEMBLY



### MEASURING METHOD

A = wall thickness  
The measurements to be provided must be the exact measurements taken from the outside of the chimney (length x width - in cm)



### DOUBLE CHIMNEYS

for measurements over 2 meters



CHIMNEYS MOUNTING SYSTEM

Prices and quotations vary according to each chimney's specific measurements.



## SUSPENDED CEILINGS

In order to meet its customers' demands, and also to offer them more and more complete solutions, Guttal has developed a system of aluminium suspended ceilings.

This range of products now complements the finishing solutions for your home.

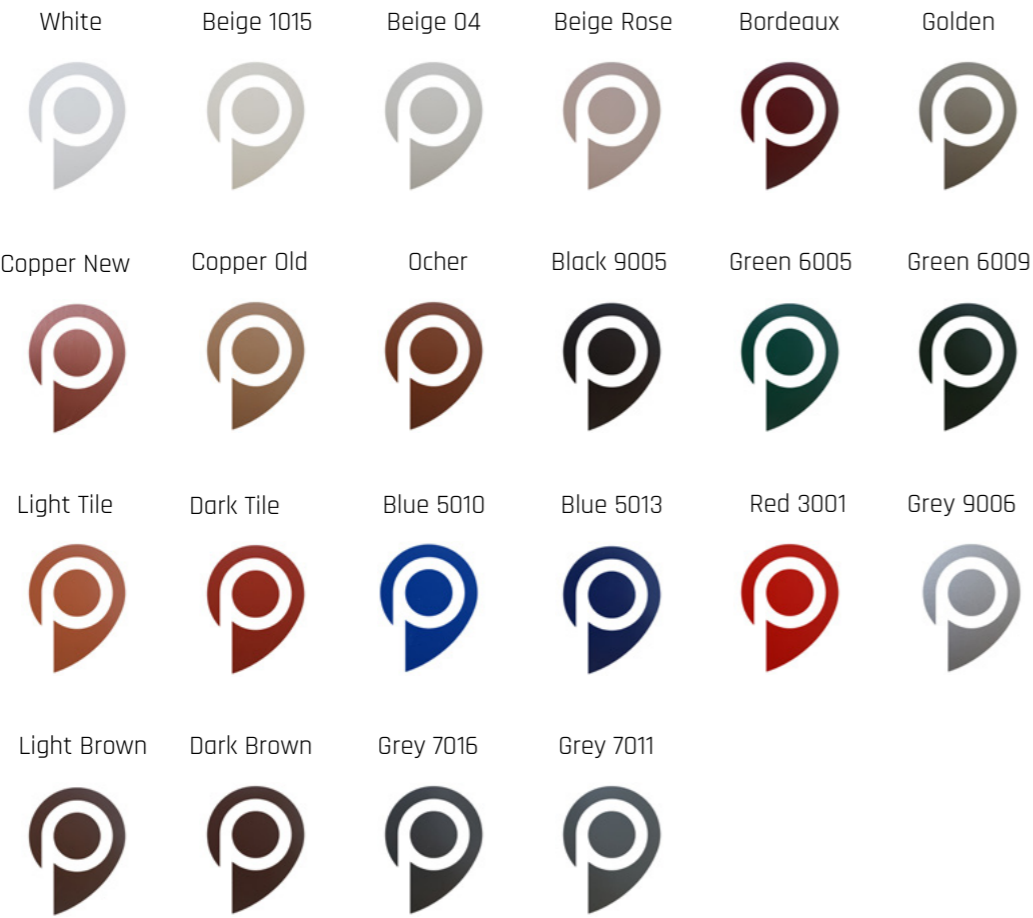
Easy to assemble, our suspended ceiling system is custom made for each customer and is based on the same range of colours and finishes as the gutters and other aluminium elements of your house, presenting itself as a technical solution that meets the aesthetic surroundings of other elements.

An alternative covering for your house, more resistant and versatile than traditional wood or PVC.

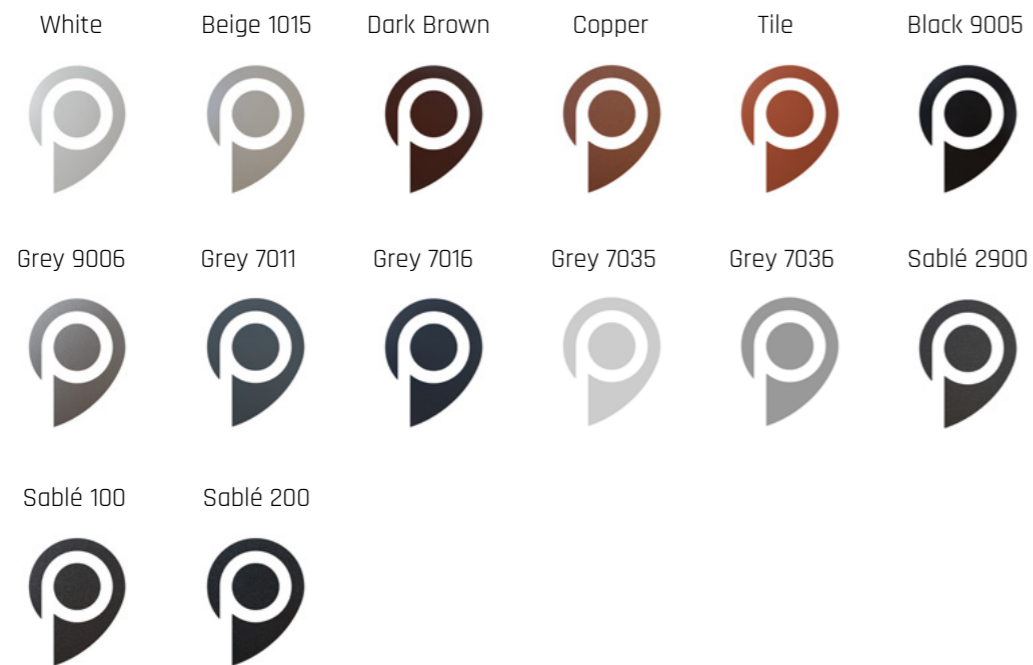


AVAILABLE COLORS

PLAIN LACQUERED - 0,74 mm



TEXTURED LACQUERED - 0,70 mm



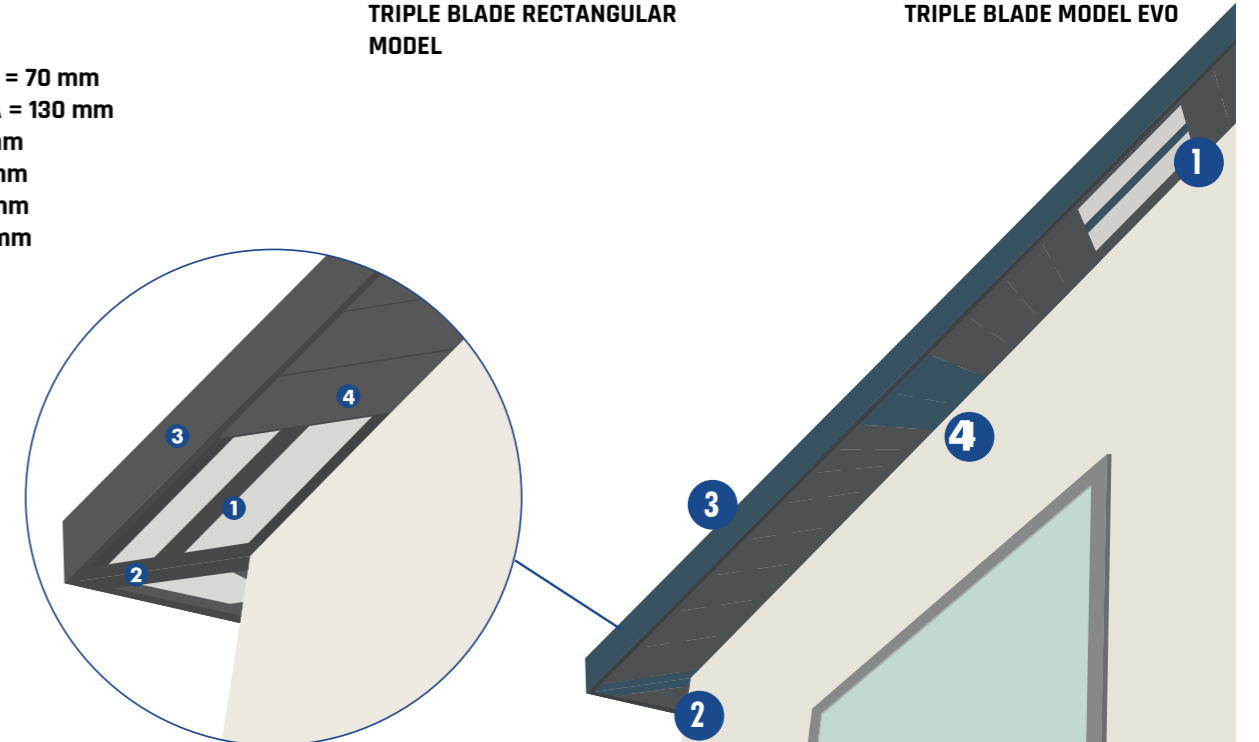
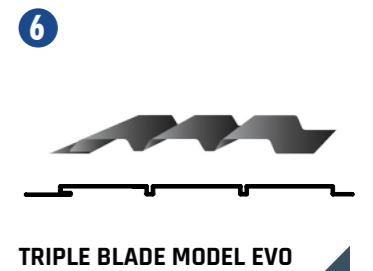
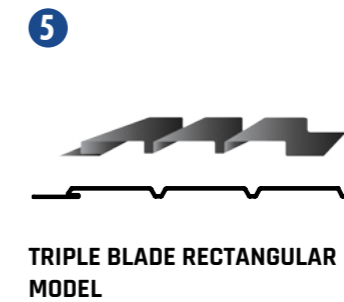
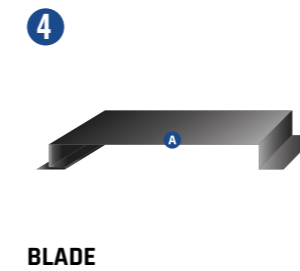
HOW TO CALCULATE THE COMPONENTS OF YOUR SUSPENDED CEILING

1 - OMEGA RAIL - 2 times the length of the ceiling in linear meters.

2 - U-RAIL - length of the ceiling + 2 times the length of the frames.

3 - REMATE FRONT - Linear meters of ceiling counting the door frame.

4/5/6 - BLADE - 1 metre / by the width of the blade times the length of the blade to be applied (distance to ceiling) times the number of linear meters of suspended ceiling.





# ALUMINIUM FENCING



## GUTTAL PRESENTS ITS NEW ALUMINIUM FENCING SYSTEM

Highly resistant, innovative and easy to assemble, this aluminium fence is the ideal solution for aesthetically delimiting your property.

Manufactured with aluminium profiles thermo-lacquered with textured polyester powder after a cycle of pre-treatment for their protection and preparation. Its maintenance is minimal and highly resistant to weather conditions, making it a longer-lasting solution compared to more traditional fencing solutions such as PVC or wood.

A versatile solution that allows different combinations of design, changing the positioning and dimensions of the blades available.

A unique and innovative sliding assembly system which facilitates the initial assembly of the slats, but also their replacement, for example in case of vandalism.

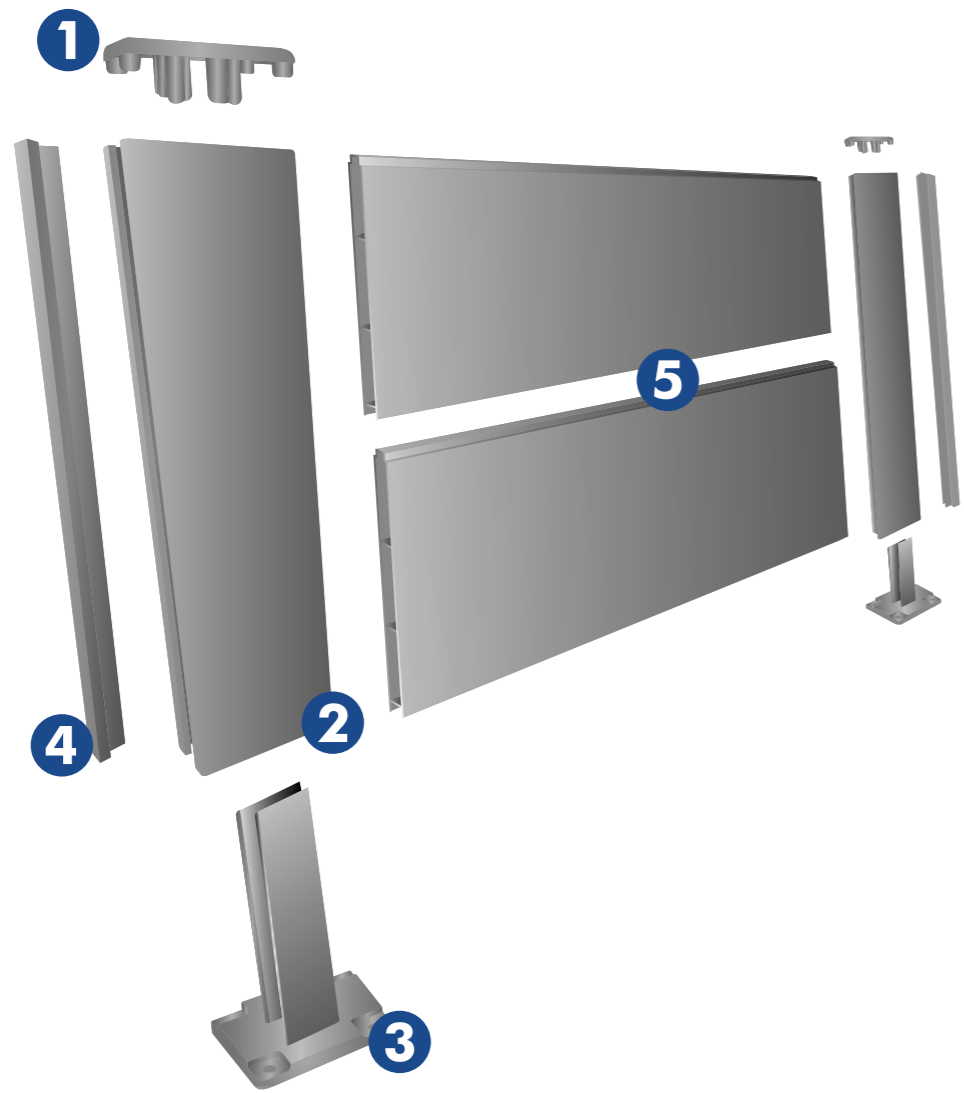
Available in 4 standard colours: White, Grey 7016, Sablé 100 and Sablé 200.

Other colours available on request and quotation.

The maximum recommended height of the fence is 1,50 meters, however, it is possible to go up to 1,90 meters if it is mounted on a solid base or with distance between blades for wind passage.

ALUMINIUM FENCING PRESENTATION





**POLE COPING CAP**

**POLE**

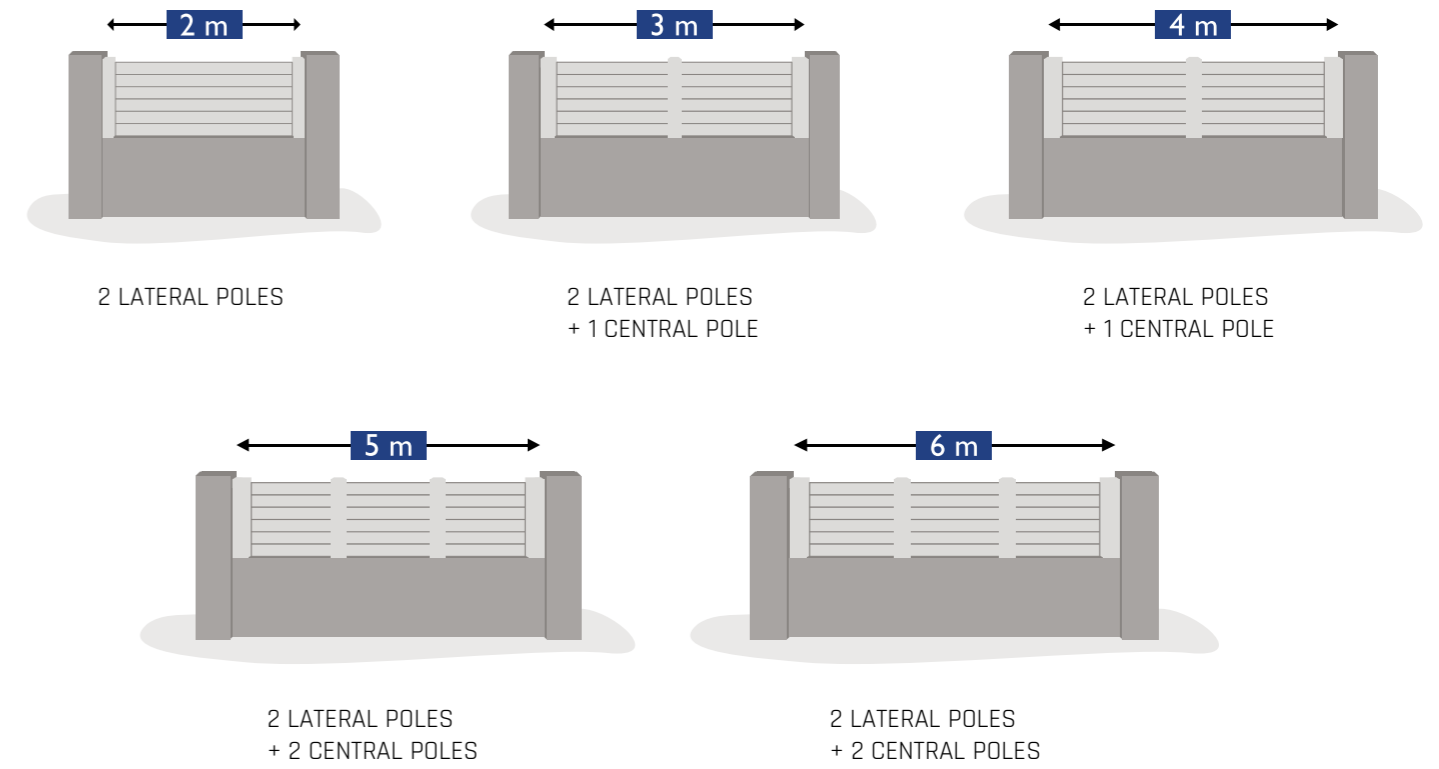
**FIXING SYSTEM**

**RIMMING RULER / SEPARATOR**

**FENCE BLADE**

**100 mm  
200 mm**

**ASSEMBLY EXAMPLES VS DISTANCE BETWEEN POLES**



**AVAILABLE COLORS**



Other colours available on request



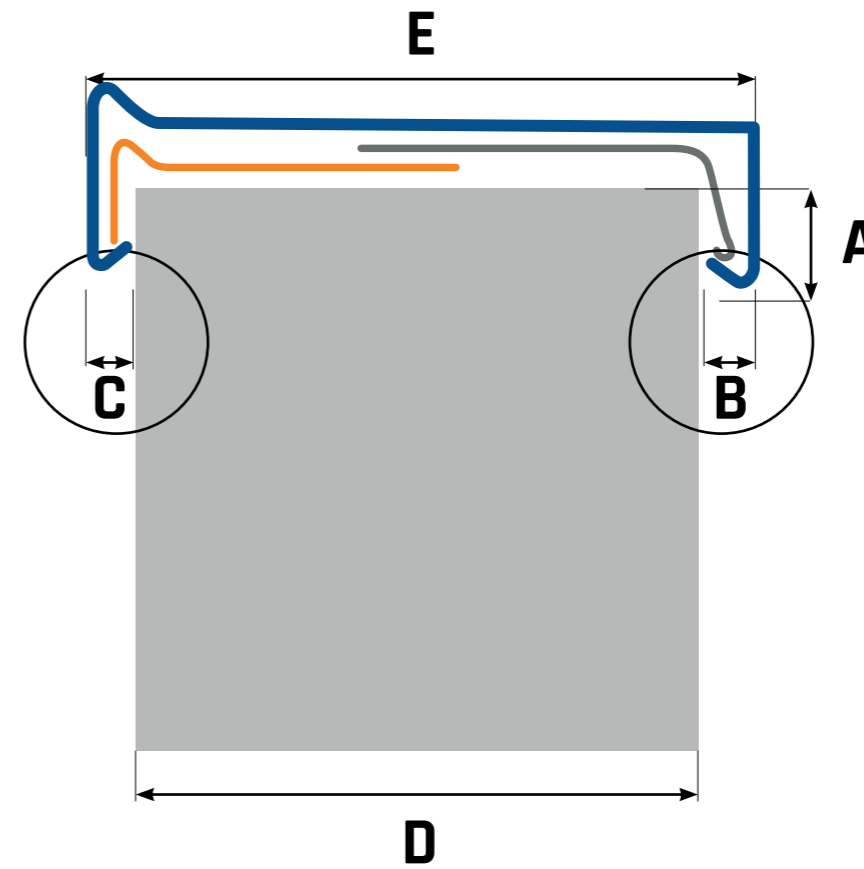
FENCING ASSEMBLY

FINISHING	Thermolacring more than 60 µm
MAXIMUM RECOMMENDED HEIGHT	1,50 m
MAXIMUM DISTANCE BETWEEN POLES	2 m
FIXING SYSTEM DIMENSIONS	9,5 x 8 cm
SUPPLY	Sold in kits with pre-cut blades

# COPING CAP

## ASSEMBLY EXAMPLE OF A COPING CAP WITH GUTTAL CLIC CLAMPS

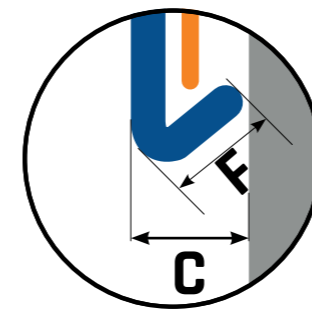
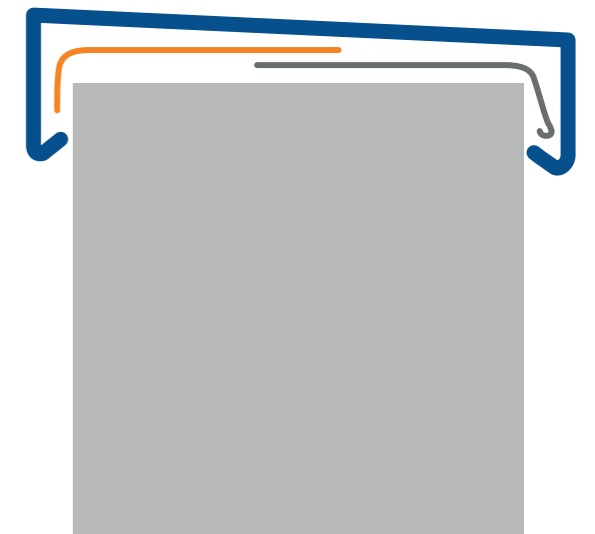
The inner loop should always be placed over the outer loop



### HOW TO CALCULATE THE COPING CAP WIDTH:

$$E = D + B + C$$

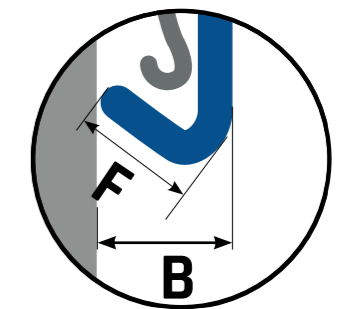
- A MIRROR CLAMP
- B DISTANCE INTERNAL CLAMP
- C OUTSIDE CLAMP DISTANCE
- D WALL WIDTH
- E COPING CAP WIDTH
- COPING CAP
- OUTER CLAMP
- INNER CLAMP
- WALL



### CORRESPONDING MEASUREMENTS BETWEEN "F" AND "C"

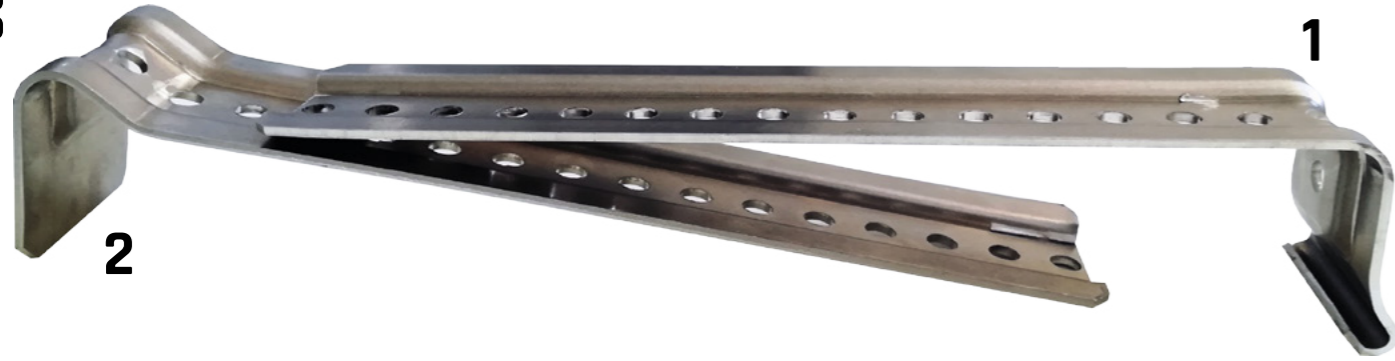
<b>F</b>	10	15	20
<b>C</b>	8	13	16

Measures in mm.



IDEAL MEASUREMENTS OF "G" = 0.43" WHEN "G" = 0.43" AND IT IS FLUSHED AGAINST THE WALL "B" = 0.31"

HOWEVER "B" CAN BE HIGHER IF PRETENDED.



Measurements of the top bar indicated above presuppose the overlapping of the inner and outer clips interior and exterior measurements minimum. It is possible to make made-to-measure cleats, with with a top ruler measuring up to 310 mm



Measurements of the top ruler indicated above, presuppose the overlapping of the interior and exterior cleats - minimum measure. It is possible to make made-to-measure cleats, with a ruler measuring up to 310 mm

**GUTTAL CLIC CLAMP FOR THE INSIDE OF THE COPING CAP - 1**

MEASURE	MESURE TOP RULER
40 mm	MOD. P I 137 mm
50 mm	MOD. P I 127 mm
60 mm	MOD. P I 117 mm
40 mm	MOD. M I 210 mm
50 mm	MOD. M I 200 mm
60 mm	MOD. M I 190 mm

box 200 units

**GUTTAL CLIC CLAMP FOR THE OUTSIDE OF THE COPING CAP WITH / WITHOUT DRIP TRAILER - 2**

MEASURE	MESURE TOP RULER
40 mm	MOD. P I 137 mm
50 mm	MOD. P I 127 mm
60 mm	MOD. P I 117 mm
40 mm	MOD. M I 210 mm
50 mm	MOD. M I 200 mm
60 mm	MOD. M I 190 mm

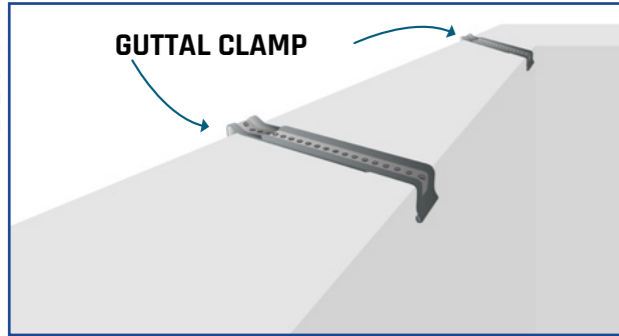
box 200 units

**BUTYL TAPE BOSTIK 1185**

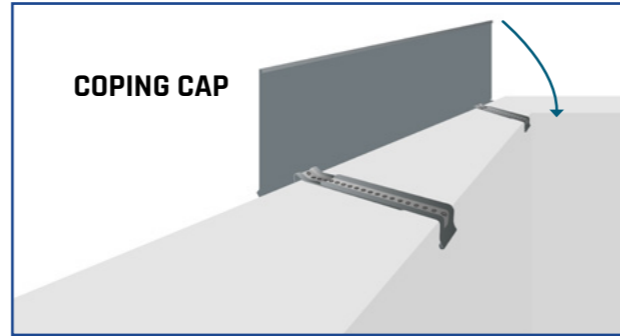
QUANTITY
26 m coil



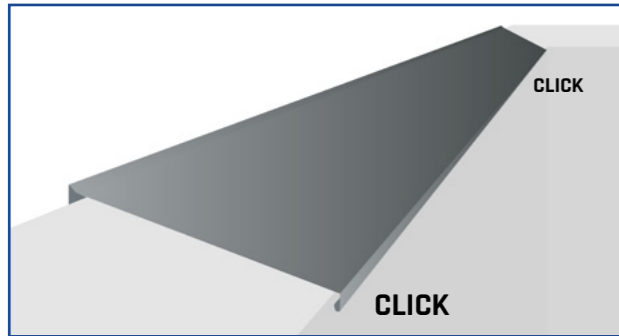




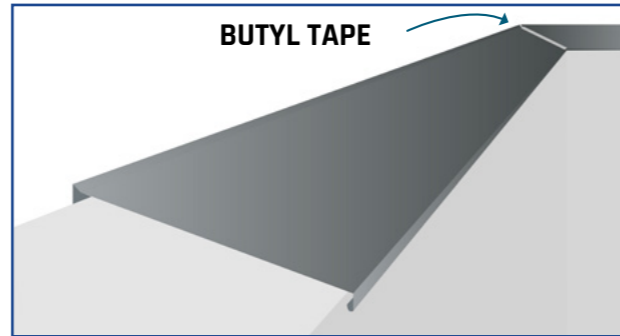
1 - Guttal Clic clamp affixed to the wall



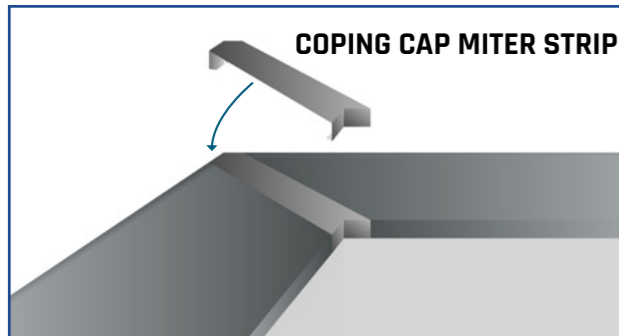
2 - How to attach the cover to the clamp



3 - Cover fitted to the wall



4 - Placing the butyl tape at the junction of the two covers



5 - Miter placement for finishing

# COPING CAP MITER STRIPS

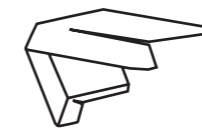


PE	PA	SABLÉS
MITER STRIP FOR COPING CAP 40	MITER STRIP FOR COPING CAP 40	MITER STRIP FOR COPING CAP 40
MITER STRIP FOR COPING CAP 50	MITER STRIP FOR COPING CAP 50	MITER STRIP FOR COPING CAP 50
MITER STRIP FOR COPING CAP 60	MITER STRIP FOR COPING CAP60	MITER STRIP FOR COPING CAP 60
EXPANSION JOINT / METRE	EXPANSION JOINT / METRE	EXPANSION JOINT / METRE

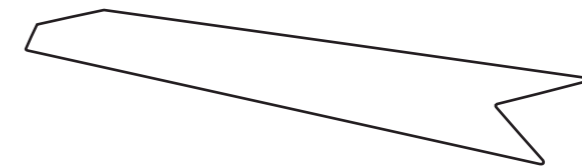
75 pairs boxes | Expansion joint sold separately in 3 meters.



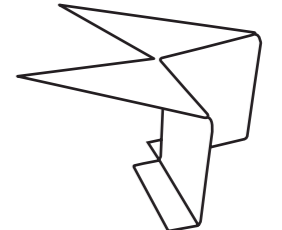
COPING CAP ASSEMBLY



EXTERIOR MITER STRIP



EXPANSION JOINT



INTERIOR MITER STRIP



# NATURAL ZINC

## EQUIVALENCE TABLE

THICKNESS: 0,65 mm / 0,80 mm

DENSITY: 7,20 g/cm<sup>3</sup>

THICKNESS	WIDTH				
	270 mm	300 mm	650 mm	1000 mm	1100 mm
0,65	1,253 Kg	1,392 Kg	3,017 Kg	4,641 Kg	5,105 Kg
0,80	1,555 Kg	1,728 Kg	3,744 Kg	5,760 Kg	6,336 Kg

## HOW TO CALCULATE WEIGHT PER METRE

THICKNESS x WIDTH x DENSITY

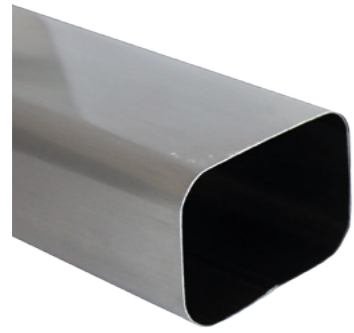
ex: 0,65 mm x 1000 mm x 7,20 g/cm<sup>3</sup>

WE HAVE ZINC N° 12 VMZINC IN BROWN PIGMENT, BLUE PIGMENT, RED PIGMENT, GREEN PIGMENT, PRE-PATINATED QUARTZ, PRE-PATINATED ANTHRA-ZINC.

N° 12

## NATURAL ZINC

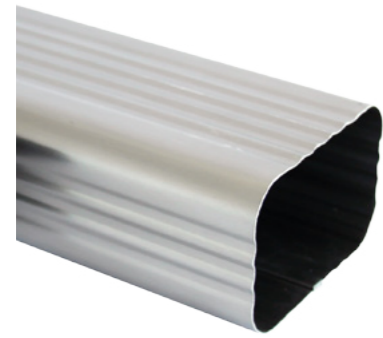
Natural zinc is pre-patinated for rainwater drainage elements, roofing and cladding of facades presented in the form of laminated material and finished products derived from this same laminate. It is a malleable, flexible and lively material that can be easily worked (cutting/knitting/profiling), harmoniously surrounding the shapes and structures of a building.



**DOWNPIPE EP. 60x80x0,65 mm / 75x105x0,65 mm PLAIN  
NATURAL ZINC**

QUANTITY PER BOX

30 meters



**DOWNPIPE EP. 60x80x0,65 mm / 75x105x0,65 mm STRIPED  
NATURAL ZINC**

QUANTITY PER BOX

30 meters



**DOWNPIPE ROUND MODEL 80 mm NATURAL ZINC**

QUANTITY PER BOX

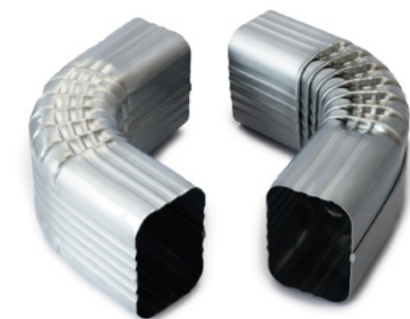
30 meters



**DOWNPIPE ROUND MODEL 100 mm NATURAL ZINC**

QUANTITY PER BOX

30 meters



**FRONTAL ELBOW EP. 60x80x0,65 mm / 75x105x0,65 mm  
PLAIN / STRIPED 70°/88° (EXT. / INT.) NATURAL ZINC**

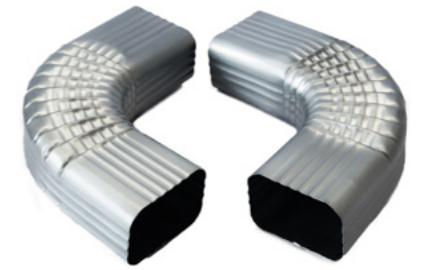
QUANTITY

unit

**LATERAL ELBOW EP. 60x80x0,65 mm / 75x105x0,65 mm  
LATERAL PLAIN / STRIPED 70°/88° (EXT. / INT.) NATURAL ZINC**

QUANTITY

unit



**ROUND MODEL ELBOW 80 mm / 100 mm  
NATURAL ZINC**

QUANTITY

unit



**END CAP FOR NATURAL ZINC GUTTERS**

MODEL | QUANTITY

300 | 25 pairs

325 | 20 pairs

380 | 20 pairs

EVO | 25 pairs

round | 25 pairs



**MITER STRIP 90° / 135° (EXT. / INT.) NATURAL ZINC**

MODEL | QUANTITY

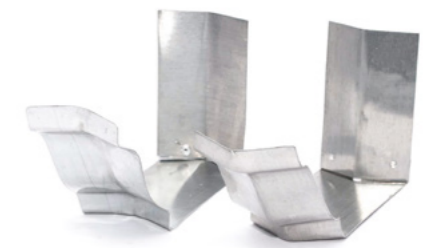
300 | 24 units box

325 | 24 units box

380 | 24 units box

EVO | 24 units box

Round | 24 units box





**NATURAL ZINC CLAMP WITH/WITHOUT SPIKE**

MODEL
80 mm l with spike 100 mm
80 mm l with spike 200 mm
100 mm l with spike 100 mm
100 mm l with spike 200 mm
80 mm l without spike
100 mm l without spike



**NATURAL ZINC OUTLET**

MODEL
70 mm
80 mm
90 mm
100 mm



**NATURAL ZINC ROUND MODEL OUTLET**

MODEL
outlet 80 mm
outlet connection 80 mm
outlet 100 mm
outlet connection 100 mm



**NATURAL ZINC UNIVERSAL OUTLET WITH OUTPUT**

MODEL
80 mm
100 mm

**NATURAL ZINC VENTILATION OUTLET**

MODEL
100 mm



**NATURAL ZINC ROUND GUTTER 333**

QUANTITY
Sold in 3 meters pitches



**NATURAL ZINC EXPANSION JOINT**

MODEL
26 cm
39 cm
Sold in 3 meters coils



**STAINLESS STEEL SLIDING CLAMP**

QUANTITY
400 units box



**STAINLESS STEEL FIXED CLAMP**

QUANTITY
1000 units box





**NATURAL ZINC RECTANGULAR MODEL HOPPER HEAD**

MODEL

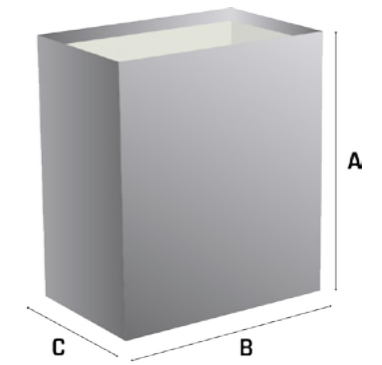
small

medium

big

**MEASURES**

MEASURES	A	B	C
small	17 cm	15,5 cm	10 cm
medium	23 cm	20 cm	13,5 cm
big	33 cm	30 cm	15 cm



**NATURAL ZINC ROUND MODEL HOPPER HEAD**

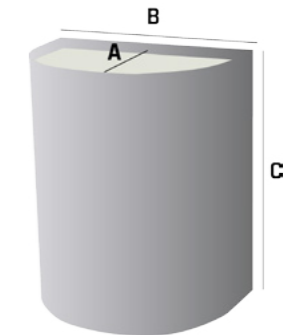
MODEL

23x18x13 cm | 80 mm

23x18x13 cm | 100 mm

**MEASURES**

A	B	C
13 cm	18 cm	23 cm



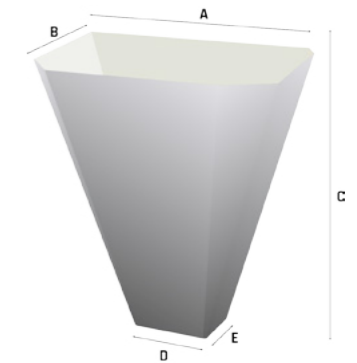
**NATURAL ZINC MODEL EVO HOPPER HEAD**

MODEL

mod. 300

mod. 380

MODEL	A	B	C	D	E
300	20 cm	11,5 cm	23 cm	6,5 cm	4,5 cm
380	23 cm	14 cm	24 cm	9 cm	6,5 cm

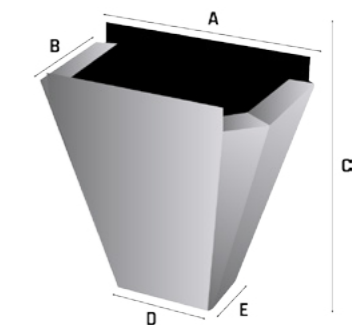


**NATURAL ZINC MODEL EVO CONNECTION**

MODEL

14 x 14 x 8,5 cm

A	B	C	D	E
14 cm	8,5 cm	14 cm	6,5 cm	4,5 cm



# PURE COPPER

## EQUIVALENCE TABLE

THICKNESS: 0,50 mm / 0,60 MM

DENSITY: 8,93 g/cm<sup>3</sup>

	270 mm	300 mm	500 mm	1000 mm	1250 mm
0,50	1,206 Kg	1,340 Kg	2,233 Kg	4,465 Kg	5,581 Kg
0,60	1,446 Kg	1,608 Kg	2,679 Kg	5,358 Kg	6,698 Kg

## HOW TO CALCULATE WEIGHT PER METRE

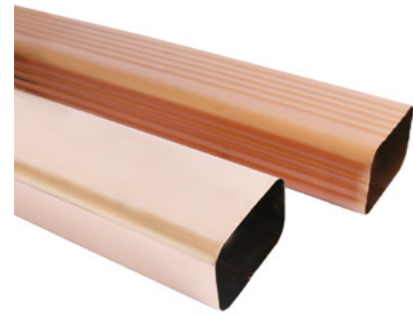
THICKNESS x WIDTH x DENSITY

ex: 0,6 mm x 1000 mm x 8,93 g/cm<sup>3</sup>

## PURE COPPER

Pure copper for rainwater drainage elements and roof and facade cladding is presented in the form of rolled material and finished products derived from this rolled material.

It is a malleable, flexible and lively material that can be easily worked (cutting/knitting/profiling), harmoniously surrounding the shapes and structures of a building.



**PURE COPPER DOWNPIPE 60x80 mm / 75x105 mm  
PLAIN/STRIPED**

QUANTITY PER BOX

30 meters



**PURE COPPER DOWNPIPE ROUND MODEL 80 mm / 100 mm**

QUANTITY PER BOX

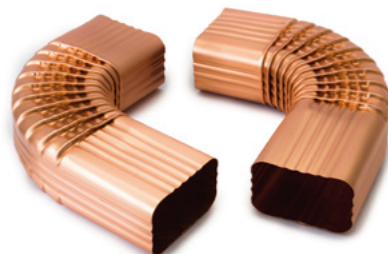
30 meters



**PURE COPPER ELBOW FRONTAL 60x80 / 75x105  
PLAIN/STRIPED 70 ° / 88 ° (EXT./INT.)**

QUANTITY

unit



**PURE COPPER ELBOW LATERAL 60x80 / 75x105  
PLAIN/STRIPED 70 ° / 88 ° (LEFT/RIGHT)**

QUANTITY

unit

**PURE COPPER ELBOW ROUND MODEL 80 mm / 100 mm 72°**

QUANTITY

unit



**PURE COPPER ELBOW ROUND MODEL 80 mm / 100 mm 72°**

MODEL | QUANTITY

300 | 25 pairs

325 | 20 pairs

380 | 20 pairs

EVO | 25 pairs

round | 30 pairs



**PURE COPPER MITER STRIP 90 ° / 135 ° (EXT. / INT.)**

MODEL | QUANTITY

300 | 24 units box

325 | 24 units box

380 | 24 units box

EVO | 24 units box

round | 24 units box



**PURE COPPER SPIGON CLAMP**

MODEL

80 mm

100 mm





**PURE COPPER OUTLET**

MODEL
70 mm
80 mm
90 mm
100 mm



**PURE COPPER ROUND MODEL OUTLET 80 mm**

MODEL
Outlet   80 mm
Outlet connection   80 mm
Outlet   100 mm
Outlet connection   100 mm



**PURE COPPER UNIVERSAL OUTLET**

MODEL
80 mm
100 mm



**PURE COPPER CORNICE CLAMP (SNOW CLAMP)**

MODEL
70 mm
80 mm
90 mm
100 mm

**CLAMP TILE NORMAL/ROUND PURE COPPER**

MODEL
10 mm
15 mm
20 mm
25 mm
32 mm
40 mm
50 mm
60 mm



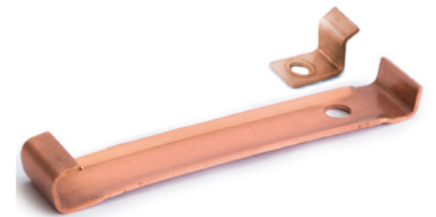
**GUTTER HANGER MOD. 300 PURE COPPER**

MODEL
300
325
380



**GUTTER HANGER MOD. 300 FOR LIP PURE COPPER**

MODEL
300
325
380



**BRACKET PURE COPPER**

MODEL
60 x 80
75 x 105





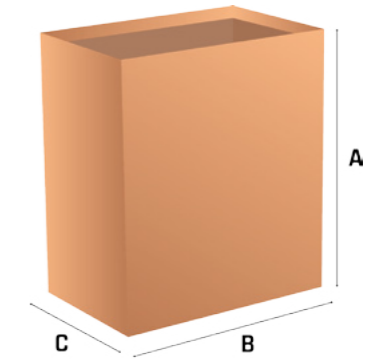


**PURE COPPER RECTANGULAR MODEL HOPPER HEAD**

MODEL
small
medium
big

**MEASURES**

MEASURES	A	B	C
small	17 cm	15,5 cm	10 cm
medium	23 cm	20 cm	13,5 cm
big	33 cm	30 cm	15 cm

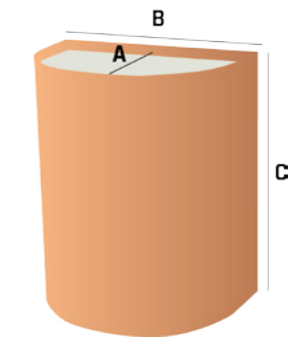


**PURE COPPER ROUND MODEL HOPPER HEAD**

MODEL
80 mm
100 mm

**MEASURES**

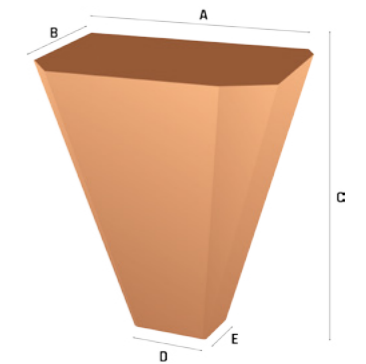
A	B	C
13 cm	18 cm	23 cm



**PURE COPPER MODEL EVO HOPPER HEAD**

MODEL
300
380

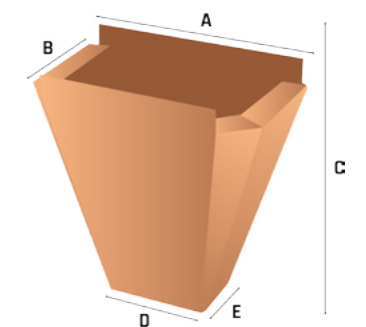
MODEL	A	B	C	D	E
300	20 cm	11,5 cm	23 cm	6,5 cm	4,5 cm
380	23 cm	14 cm	24 cm	9 cm	6,5 cm



**PURE COPPER MODEL EVO CONNECTION**

MODEL
14 x 14 x 9 cm

A	B	C	D	E
14 cm	8,5 cm	14 cm	6,5 cm	4,5 cm



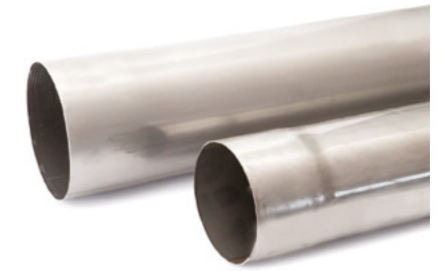


# STAINLESS STEEL

## STAINLESS STEEL DOWNPIPE 80 mm / 100 mm AISI 304 2B - 0,5 mm ELECTROWELDED

QUANTITY PER BOX

30 meters



## STAINLESS STEEL ELBOW 72° AISI 304 2B ELECTROWELDED

QUANTITY

unit



## STAINLESS STEEL SPIGON CLAMP AISI 304 2B

MODEL

80 mm

100 mm





**RECTANGULAR MODEL HOPPER HEAD EM STAINLESS STEEL  
AISI 304 2B**

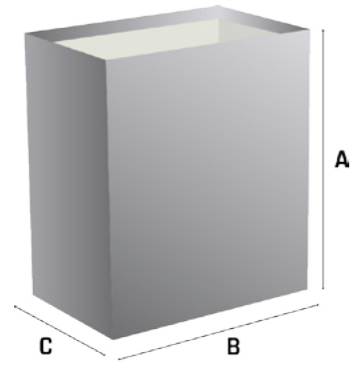
MODEL \_\_\_\_\_  
 small \_\_\_\_\_  
 medium \_\_\_\_\_  
 big \_\_\_\_\_



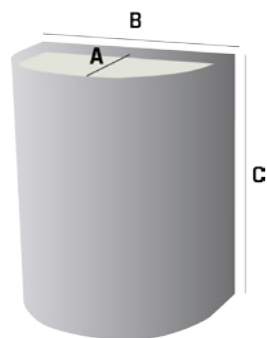
**STAINLESS STEEL ROUND MODEL  
HOPPER HEAD 80 mm / 100 mm AISI 304 2B**

QUANTITY \_\_\_\_\_  
 unit \_\_\_\_\_

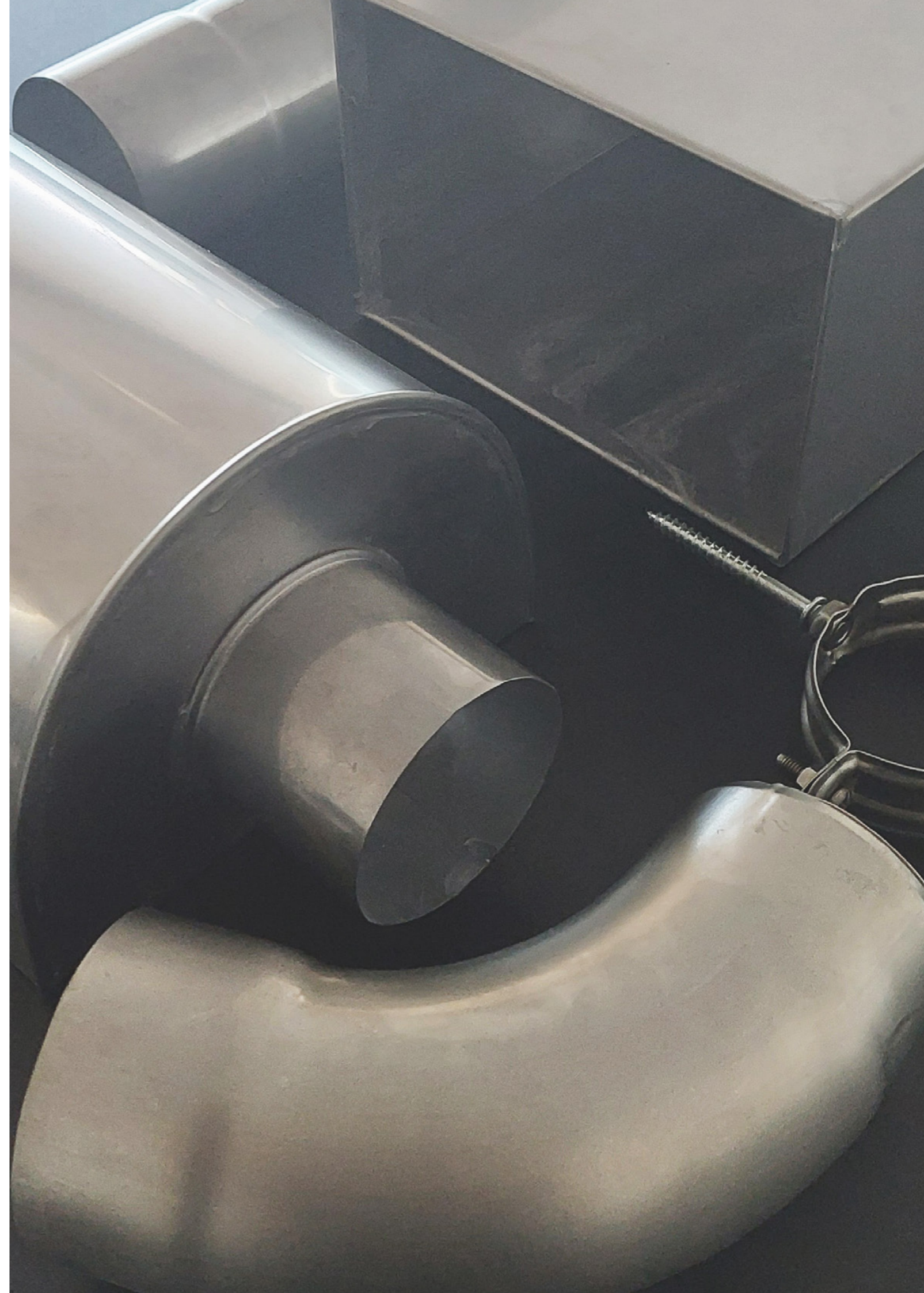
**MEASURES**



MEASURES	A	B	C
small	17 cm	15,5 cm	10 cm
medium	23 cm	20 cm	13,5 cm
big	33 cm	30 cm	15 cm



MEASURES		
A	B	C
13 cm	18 cm	23 cm



# FASTENINGS | TOOLS

## STAINLESS STEEL SCREW A2 HEXAGONAL DIN 933

MEASURE | QUANTITY

M6/10 | 500 units box

M6/16 | 200 units box

M6/20 | 200 units box

M8/30 | 200 units box



## STAINLESS STEEL NUT A2 HEXAGONAL DIN 934

MEASURE | QUANTITY

M6 | 500 units box

M8 | 500 units box



## STAINLESS STEEL WASHER DIN 125A

MEASURE | QUANTITY

M6 | 1000 units box



Sold in complete boxes. Please contact us for inquiries about quantities.



**TAPIT UNIVERSAL FLAT HEAD ZINCED STEEL RAWLPLUG**

MEASURE

6x45 mm

6x80 mm

8x100 mm

8x120 mm



**TAPIT TECFI FLAT HEAD RAWLPLUG**

MEASURE | QUANTITY

6x80 mm | 200 units box

6x100 mm | 100 units box



**TAPIT UNIVERSAL FLAT HEAD STAINLESS STEEL A2 RAWLPLUG**

MEASURE

6x40 mm

6x80 mm

8x100 mm

**TAPIT SPIT HIT ZINCED STEEL RAWLPLUG**

MEASURE | QUANTITY

M 6x30/5 P | 200 units box

M 6x50/25 P | 100 units box

M 6x65/40 P | 100 units box



**TAPIT SPIT HIT STAINLESS STEEL A2 RAWLPLUG**

MEASURE | QUANTITY

M 6x30/5 P | 100 units box

M 6x50/25 P | 50 units box

M 6x65/40 P | 50 units box



**SPECIAL RAWLPLUG FOR DRYWALL SPIT ISD (SCREW INCLUDED)**

MEASURE | QUANTITY

50 mm | box 50 units box





**RIVET DIN 7337 RAW ALUMINIUM**

MEASURE | QUANTITY

3x10 mm | 500 units box

4x12 mm | 500 units box



**RIVET DIN 7337 LACQUERED ALUMINIUM - 3x10 mm**

QUANTITY

100 units bag

500 units box

AVAILABLE COLORS

White	Beige 1015	Beige 04	Beige Rose	Bordeaux	Golden	Cobre Novo
Copper Old	Light Tile	Dark Tile	Ocher	Green 6005	Green 6009	Grey 9006
Grey 7011	Grey 7016	Light Brown	Dark Brown	Black 9005	OTHER COLORS AVAILABLE UPON REQUEST	

**RIVET DIN 7337 PURE COPPER - 3x10 mm**

QUANTITY

100 units bag



Sold in complete boxes. Please contact us for inquiries about quantities.



**OFFSET AVIATION SNIPS Max2000® LEFT**

QUANTITY \_\_\_\_\_  
UNIT \_\_\_\_\_



**OFFSET AVIATION SNIPS Max2000® RIGHT**

QUANTITY \_\_\_\_\_  
UNIT \_\_\_\_\_



**ANDY ALUMINUM HANDLED SNIPS 12**

QUANTITY \_\_\_\_\_  
UNIT \_\_\_\_\_



**AVIATION SNIPS: MAX2000® LEFT**

QUANTITY \_\_\_\_\_  
UNIT \_\_\_\_\_



**AVIATION SNIPS: MAX2000® RIGHT**

QUANTITY \_\_\_\_\_  
UNIT \_\_\_\_\_

**AVIATION SNIPS M2003 COMBINATION CUTTING**

QUANTITY \_\_\_\_\_  
UNIT \_\_\_\_\_



**DOUBLE CUT AVIATION SNIPS M2004**

QUANTITY \_\_\_\_\_  
UNIT \_\_\_\_\_



**GUTTER DOWNPIPE CRIMPER C4R**

QUANTITY \_\_\_\_\_  
UNIT \_\_\_\_\_



**ONE-INCH HAND NOTCHER N2R**

QUANTITY \_\_\_\_\_  
UNIT \_\_\_\_\_



**SNAP LOCK PUNCH FOR SHEET METAL SL1R**

QUANTITY \_\_\_\_\_  
UNIT \_\_\_\_\_





**HAND SEAMERS WITH FORGED JAWS S2R**

QUANTITY \_\_\_\_\_  
 UNIT \_\_\_\_\_



**HAND SEAMERS WITH FORGED JAWS S6R**

QUANTITY \_\_\_\_\_  
 UNIT \_\_\_\_\_



**HAND SEAMERS WITH FORGED JAWS S3R**

QUANTITY \_\_\_\_\_  
 UNIT \_\_\_\_\_



**SIDESWIPER® II - VINYL SIDING REMOVAL TOOL SRT2**

QUANTITY \_\_\_\_\_  
 UNIT \_\_\_\_\_



**ADJUSTABLE SHEET METAL SCRIBE TOOL A60**

QUANTITY \_\_\_\_\_  
 UNIT \_\_\_\_\_

**TURBOSHEAR® AUTOMOTIVE - HEAVY DUTY TSHD EV**

MODEL \_\_\_\_\_  
 TSHD EV \_\_\_\_\_  
 TSHDC EV WITH CARRYING CASE \_\_\_\_\_



**MALCO TSHDRB REPLACEMENT BLADE FOR TSHD HEAVY DUTY SHEET METAL TURBO SHEAR**

QUANTITY \_\_\_\_\_  
 UNIT \_\_\_\_\_



**SPINDLE PROTECTION TUBE TSC1 FOR MALCO SHEARS TSHDC TURBOSHEAR HEAVY DUTY**

QUANTITY \_\_\_\_\_  
 UNIT \_\_\_\_\_



**CLAMPING CLAMP FOR TSDC DRILL FOR SHEARS MALCO TSH-DC TURBOSHEAR HEAVY DUTY**

QUANTITY \_\_\_\_\_  
 UNIT \_\_\_\_\_



**PORTABLE MINI-BRAKE MB48A**

QUANTITY \_\_\_\_\_  
 UNIT \_\_\_\_\_







**PORTABLE MINI-BRAKE MB48B PAN STYLE (SEGMENTED)**

QUANTITY \_\_\_\_\_

UNIT \_\_\_\_\_



**LEG KIT MBL FOR PORTABLE MINI-BRAKE MB48A E MB48B**

QUANTITY \_\_\_\_\_

UNIT \_\_\_\_\_





**COMBINATION TIN SNIPS RIGHT (270101)**

QUANTITY \_\_\_\_\_  
 unit \_\_\_\_\_



**COMBINATION TIN SNIPS LEFT (270601)**

QUANTITY \_\_\_\_\_  
 unit \_\_\_\_\_



**FIGURE TIN SNIPS (268101)**

QUANTITY \_\_\_\_\_  
 unit \_\_\_\_\_



**SCREW REPLACEMENT KIT FOR SHEARS  
 268101 - 270101 - 270601 - 268105**

QUANTITY \_\_\_\_\_  
 unit \_\_\_\_\_



**TINSMITH'S SEAMING PLIERS STRAIGHT - 100 MM - J.S.  
 (282054)**

QUANTITY \_\_\_\_\_  
 unit \_\_\_\_\_



**SEAMING PLIERS STRAIGHT - 40 MM - J.C. (282004)**

QUANTITY \_\_\_\_\_  
 unit \_\_\_\_\_

**SEAMING PLIERS STRAIGHT - 80 MM - J.C. (282003)**

MEASURE \_\_\_\_\_  
 unit \_\_\_\_\_



**SEAMING PLIERS 45° BEVELLED - 180 MM - STAINLESS STEEL  
 J.C (282326NR)**

QUANTITY \_\_\_\_\_  
 unit \_\_\_\_\_



**SEAMING PLIERS 45° MITTERS- 40 MM - J.C. (282104)**

QUANTITY \_\_\_\_\_  
 unit \_\_\_\_\_



**SEAMING PLIERS 30° MITTERS - 180 MM - STAINLESS STEEL  
 J.C. (282358NR)**

QUANTITY \_\_\_\_\_  
 unit \_\_\_\_\_



**SEAMING PLIERS 90° MITTERS - 40 MM - J.C. (282204)**

QUANTITY \_\_\_\_\_  
 unit \_\_\_\_\_





**CORNER SEAMING PLIERS - 60 MM - J.S. (282451)**

QUANTITY \_\_\_\_\_

unit \_\_\_\_\_



**SEAMING PLIERS - 80 MM - J.C (282801)**

QUANTITY \_\_\_\_\_

unit \_\_\_\_\_



**TINSMITH'S SEAMING PLIERS 45° MITTERS WITH LAP JOINT - 60 MM (282061)**

QUANTITY \_\_\_\_\_

unit \_\_\_\_\_



**SEAMING PLIERS 45° MITTERS - 60 MM - STAINLESS STEEL J.S. (282161)**

QUANTITY \_\_\_\_\_

unit \_\_\_\_\_



**TINSMITH'S SEAMING PLIERS STRAIGHT PICCOLO PATTERN - 24 MM - J.S. (282901)**

QUANTITY \_\_\_\_\_

unit \_\_\_\_\_



**SEAMING PLIERS 45° MITTERS SMALL - 24 MM - J.S. (283001)**

QUANTITY \_\_\_\_\_

unit \_\_\_\_\_

**TINSMITH'S ROUND NOSE PLIERS WITH BOX JOINT WITH TEETH - 45 MM - J.S. (281001)**

QUANTITY \_\_\_\_\_

unit \_\_\_\_\_



**TINSMITH'S ROUND NOSE PLIERS WITH BOX JOINT WITHOUT TEETH - 45 MM - J.S. (281011)**

QUANTITY \_\_\_\_\_

unit \_\_\_\_\_



**TINSMITH'S FLAT NOSE PLIERS WITH BOX JOINT WITH TEETH - 50 MM - J.S. (280001)**

QUANTITY \_\_\_\_\_

unit \_\_\_\_\_



**TINSMITH'S FLAT NOSE PLIERS WITH BOX JOINT WITHOUT TEETH - 50 MM - J.S. (280011)**

QUANTITY \_\_\_\_\_

unit \_\_\_\_\_



**SEAM OPENING PLIERS - C45 CARBON STEEL (279501)**

QUANTITY \_\_\_\_\_

unit \_\_\_\_\_



**GUTTER PLIERS - C45 CARBON STEEL (279101)**

QUANTITY \_\_\_\_\_

unit \_\_\_\_\_





**TINSMITH'S PLIERS - C45 CARBON STEEL (279001)**

QUANTITY \_\_\_\_\_  
 unit \_\_\_\_\_



**SELF GRIP WRENCH PARALLEL JAWS (118101)**

QUANTITY \_\_\_\_\_  
 unit \_\_\_\_\_



**SELF GRIP WRENCH (118001)**

QUANTITY \_\_\_\_\_  
 unit \_\_\_\_\_



**SELF GRIP WRENCH CONCAVE JAWS (118020)**

QUANTITY \_\_\_\_\_  
 unit \_\_\_\_\_



**PLASTIC FACED HAMMER ROUND - 50 MM (278505)**

QUANTITY \_\_\_\_\_  
 unit \_\_\_\_\_



**WOODEN HAMMER WITH METAL WASHER JACKET (278515 / 278518)**

MEASURE \_\_\_\_\_  
 50 mm \_\_\_\_\_  
 80 mm \_\_\_\_\_

**PLASTIC FACED HAMMER WEDGE SHAPE - 155x85x35 MM (278501)**

QUANTITY \_\_\_\_\_  
 unit \_\_\_\_\_



**WOOD HANDLE FOR PLASTIC FACED HAMMER WEDGE SHAPE 350 MM (278520)**

QUANTITY \_\_\_\_\_  
 unit \_\_\_\_\_



**PLASTIC FACED HAMMER RECTANGULAR - 145x75x35 MM (278503)**

QUANTITY \_\_\_\_\_  
 unit \_\_\_\_\_



**WOOD HANDLE FOR HAMMER - 350 MM (278550)**

QUANTITY \_\_\_\_\_  
 unit \_\_\_\_\_



**PLASTIC-FACED HAMMER DESMOPAN® (101202-203-204)**

MEASURE \_\_\_\_\_  
 32 mm \_\_\_\_\_  
 40 mm \_\_\_\_\_  
 50 mm \_\_\_\_\_





**REPLACEMENT PLASTIC HEAD DESMOPAN Ø 32-40-50 mm  
(101302-101303-101304)**

QUANTITY

32 mm

40 mm

50 mm



**ENGINEER'S HAMMER DIN 1041 - 100 - 200 - 300 - 400 -  
500 g (100402 - 100404 - 100406 - 100407 - 100408)**

MEASURE

100 g

200 g

300 g

400 g

500 g



**WOOD HANDLE FOR HAMMER DIN1041**

MEASURE

100 g

200 g

300 g

400 g

500 g

**CORNER AND EDGE BENDING TOOL (278401)**

QUANTITY

unit



**ROOFING SEAMER STRAIGHT - 120 - 140 mm  
(278001 - 278002)**

MEASURE

120 mm

140 mm



**DOUBLE ROOFING SEAMER - 140 mm (278101)**

QUANTITY

unit



**SINGLE ROOFING SEAMER - 160 MM (278102)**

QUANTITY

unit



**CORNER ROOFING SEAMER - 110 MM (278201)**

QUANTITY

unit





**PLASTIC SEAMING BOARD (278701 - 278702)**

MEASURE

500 x 65 x 25

500 x 65 x 35



**PLASTIC SEAMING PIECE WITH HANDLE- 290x140MM ALT/25-35MM**

QUANTITY

unit



**PLASTIC SEAMING PIECE - 130x95x50MM-ALT/25-35MM (278801)**

QUANTITY

unit



**SQUARE AWLS SHATTER PROOF - 210 MM (346001)**

QUANTITY

unit



**ROUND AWLS SHATTER PROOF - 210 MM (347001)**

QUANTITY

unit



**SCRIBER WITH CARBIDE TIP (261601)**

MEASURE

50 mm

**SCRIBER - 300 MM (262001)**

QUANTITY

unit



**REGULAR DIVIDER - 300 MM (250003)**

QUANTITY

unit



**BOW DIVIDER WITH BOW AND LOCKING SCREW- 280 MM (251002)**

QUANTITY

unit



**BOW DIVIDER WITH SPRING AND ADJUSTMENT SCREW - 150 MM (254003)**

QUANTITY

unit



**ALUMINIUM RULER WITH GRADUATION 300-400-500-600 mm (263403-263404-263405-263406)**

MEASURE

300 mm

400 mm

500 mm

600 mm





**JOINER'S SQUARE ALUMINIUM WITH GRADUATION 200-300-400 mm (343020-343030-343040)**

MEASURE

200 x 150 mm

300 x 170 mm

400 x 200 mm



**SINGLE LOCK SEAMER - 220 MM (282412)**

QUANTITY

unit



**DOUBLE SEAMER - 200 MM (282415)**

QUANTITY

unit



**DRIP EDGE BENDER - 250 MM (282413)**

QUANTITY

unit



**DRIP EDGE SEAMER - 200 MM (282414)**

QUANTITY

unit



**SCRIBER - 300 MM (262001)**

MEASURE

300 mm





**MANUAL MINI-BRAKE WUKO UNI BENDER 2204**

QUANTITY \_\_\_\_\_  
 unit \_\_\_\_\_



**EXPANSION CONE FOR PIPE BURSTING 80 mm / 100 mm**

QUANTITY \_\_\_\_\_  
 80 mm \_\_\_\_\_  
 100 mm \_\_\_\_\_  
 pack (80+100mm) \_\_\_\_\_



**GUTTER SUPPORT RACKS**

MEASURE \_\_\_\_\_  
 20 cm \_\_\_\_\_  
 45 cm \_\_\_\_\_



**WOOD STUMP FOR RECTANGULAR ELBOWS**

MEASURE \_\_\_\_\_  
 60x80 mm \_\_\_\_\_  
 75x105 mm \_\_\_\_\_  
 Set kit \_\_\_\_\_



**WOOD STUMP FOR ROUND ELBOWS**

MEASURE \_\_\_\_\_  
 80 mm \_\_\_\_\_  
 100 mm \_\_\_\_\_  
 Set kit \_\_\_\_\_

**GUTTAL LASHING STRAP WITH BUCKLE**

MEASURE \_\_\_\_\_  
 3 m | 25 mm \_\_\_\_\_  
 4 m | 25 mm \_\_\_\_\_  
 6 m | 25 mm \_\_\_\_\_  
 3 m | 35 mm \_\_\_\_\_  
 4 m | 35 mm \_\_\_\_\_  
 6 m | 35 mm \_\_\_\_\_



**SPANNER N°8/10 MM FOR TURNING/ADJUSTING THE STAINLESS STEEL CLAMP - 8 MM**

QUANTITY \_\_\_\_\_  
 unit \_\_\_\_\_



**QUICK-RELEASE QUICK PIHER 52530 - 30 CM**

QUANTITY \_\_\_\_\_  
 unit \_\_\_\_\_



**SEALANT APPLICATION GUN**

QUANTITY \_\_\_\_\_  
 unit \_\_\_\_\_



**BEARGRIP 810 COMPACT RIVETING PLIERS**

QUANTITY \_\_\_\_\_  
 unit \_\_\_\_\_





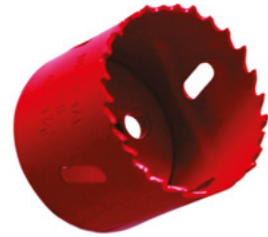


**COMBINATION SPANNER WITH REVERSIBLE RATCHET  
CHROME-VANADIUM**

QUANTITY

10 mm

13 mm



**ECEF CRANE DRILL BI-METAL CROWN Ø 51 A 92 mm**

MEASURE

Ø 51 | 70 mm

Ø 73 | 92 mm



**SDS-PLUS QUICK CHANGE CRANKSHAFT ADAPTER  
32-210 mm**

QUANTITY

unit



**ADAPTER FOR HEXAGONAL QUICK CHANGE CRANKSHAFT BIT  
32-210 mm**

QUANTITY

unit



**STAINLESS STEEL CUTTING DISC STAYER/ MOLITAL EXTRA  
THIN**

QUANTITY

unit

box 50 unit



**GUTTAL SUPER 5LT CELLULOSE SOLVENT**

QUANTITY

unit





**READY-TO-USE ROOFING KIT (REF.66379)**

QUANTITY \_\_\_\_\_  
 unit \_\_\_\_\_



**NEW ROOFER SOLDERING IRON COMPLETE KIT (REF.6367/8)**

QUANTITY \_\_\_\_\_  
 unit \_\_\_\_\_



**ROOFER PACK (REF.66278)**

QUANTITY \_\_\_\_\_  
 unit \_\_\_\_\_



**NEW ROOFER SOLDERING IRON (REF.367/8)**

QUANTITY \_\_\_\_\_  
 unit \_\_\_\_\_

**NEW ROOFER SOLDERING IRON (REF. 367/9)**

QUANTITY \_\_\_\_\_  
 unit \_\_\_\_\_



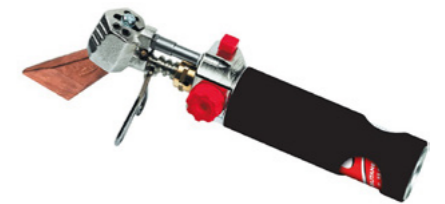
**ROOFING IRON COMPRISING 1 LANCE WITH POINT REF. 4679 + 1 HANDLE REF. 602 WITH 3/8 LEFT-HAND INLET SWIVEL COUPLING**

QUANTITY \_\_\_\_\_  
 unit \_\_\_\_\_



**ROOFER'S SOLDERING IRON WITH PIEZO SELF-CONTAINED CARTRIDGE IGNITION, SUPPLIED WITH 1 TURBO TIP REF. 778 AND 1 CARTRIDGE OF PROPYLENE GAS (26%) + BUTANE + PROPANE 60 G REF. 445**

QUANTITY \_\_\_\_\_  
 unit \_\_\_\_\_



**RUBBER HOSE (REF.963/5)**

QUANTITY \_\_\_\_\_  
 unit \_\_\_\_\_





**LONG LASTING CARE TIP + 235 G REF. 1772**

QUANTITY \_\_\_\_\_  
 unit \_\_\_\_\_



**LONG LASTING CARE TIP + 240 G REF. 1778**

QUANTITY \_\_\_\_\_  
 par \_\_\_\_\_



**POINT + LANCE SET REF. 2648**

QUANTITY \_\_\_\_\_  
 unit \_\_\_\_\_



**SPIKE + LANCE SET 35 X 3.5 mm 540 G REF. 4679**

QUANTITY \_\_\_\_\_  
 unit \_\_\_\_\_

**COPPER WELDING CABLE 260g REF. 678**

QUANTITY \_\_\_\_\_  
 unit \_\_\_\_\_



**TIP OF +415 G FOR IRON REF. 649**

QUANTITY \_\_\_\_\_  
 unit \_\_\_\_\_



**DIAMOND TIP +235 G REF. 672**

QUANTITY \_\_\_\_\_  
 par \_\_\_\_\_





**HOLDER FOR STONE AND FLUX WITH BRUSH (REF.9640)**

QUANTITY \_\_\_\_\_  
 unit \_\_\_\_\_



**SALMIK STONE - 140g (REF.9641)**

QUANTITY \_\_\_\_\_  
 unit \_\_\_\_\_



**BAG OF 2 BRUSHES FOR FLUX REF. 9644**

QUANTITY \_\_\_\_\_  
 unit \_\_\_\_\_



**BAG WITH 25 HORSEHAIR BRUSHES FOR FLUX REF. 9643**

QUANTITY \_\_\_\_\_  
 unit \_\_\_\_\_

**50% TIN SOLDER**

QUANTITY \_\_\_\_\_  
 unit \_\_\_\_\_



**5 GAS NOZZLES (REF.36713)**

QUANTITY \_\_\_\_\_  
 unit \_\_\_\_\_



**KIT OF 2 NIPPLE UNIONS (REF.963R)**

QUANTITY \_\_\_\_\_  
 unit \_\_\_\_\_





**SPRAYS**

REFERENCE

99610 - BLUE

99615 - MATTE DARK BROWN

99620 - RED

99625 - GREY QUARTZ

99630 - GREEN

99640 - BROWN

99650 - GALVA GLOSSY

99650 - GALVA MATTE



**GAS REPLACEMENT CARTRIDGE (15% PROPANE) 60g REF. 444**

QUANTITY

unit



**SOLDERING PASTE 100G (REF.852)**

QUANTITY

unit



**SUPER DECAPANT FOR OXIDISED METALS REF. 845**

QUANTITY

unit

**FLUX FOR PRE WEATHERED ZINC (REF.850)**

QUANTITY

unit



**DECAP' EXPRESS (REF.840)**

QUANTITY

unit



**FLUX FOR SHEET METAL ROOFING - 1 L (REF.847)**

QUANTITY

unit



**VMZINC WELDING DECAPANT - 1 L**

QUANTITY

unit





**ALUMINUM PLUS 67 NORMAL STAIRCASE**

MEASURE

DOUBLE | 2 + 2 m

DOUBLE | 2,5 + 2,5 m

DOUBLE | 3 + 3 m

DOUBLE | 3,5 + 3,5 m

DOUBLE | 4 + 4 m

DOUBLE | 5 + 5 m

TRIPLE | 2,5+2,5+2,5 m

TRIPLE | 3 + 3 + 3 m

TRIPLE | 3,5+3,5+3,5 m

TRIPLE | 4 + 4 + 4 m



**REINFORCED ALUMINUM STAIRCASE SUPER**

MEASURE

DOUBLE | 3 + 3 m

DOUBLE | 3,5 + 3,5 m

DOUBLE | 4 + 4 m

DOUBLE | 5 + 5 m

TRIPLE | 3 + 3 + 3 m

TRIPLE | 3,5+3,5+3,5 m

TRIPLE | 4 + 4 + 4 m

TRIPLE | 5 + 5 + 5 m



**TELESCOPIC ALUMINUM LADDER**

MEASURE

2,60 m

3,80 m

**SUPER ALUMINUM LADDER**

MEASURE

3 STEPS

4 STEPS

5 STEPS

6 STEPS

7 STEPS

8 STEPS



**ALUMINUM ELITE LADDER**

MEASURE

3 STEPS

4 STEPS

5 STEPS

6 STEPS

7 STEPS

8 STEPS



**EXTRA ALUMINUM LADDER**

MEASURE

3 STEPS

4 STEPS

5 STEPS

6 STEPS

7 STEPS

8 STEPS

9 STEPS



# CHEMICAL SEALANTS, ADHESIVES CONSUMABLES AND SPRAYS



## DEN BRAVEN / BOSTIK

THE DEN BRAVEN BRAND WAS ACQUIRED BY BOSTIK. THE LABELS WERE CHANGED BUT PRODUCTS MAINTAIN THE SAME QUALITY.

### BOSTIK H550 SEAL'N'BOND ALL-IN-ONE 290ml

QUANTITY

unit

12 units box

WHITE



GREY



TILE



### BOSTIK H505 SEAL'N'BOND CRYSTAL 290ml

QUANTITY

unit

12 units box





TRANSPARENT





**BOSTIK SEAL'N'FLEX H750 PREMIUM 290ml**










QUANTITY \_\_\_\_\_  
 unit \_\_\_\_\_  
 12 units box \_\_\_\_\_

- WHITE 
- GREY 
- BROWN 
- BLACK 



**BOSTIK S735 SEAL'N'FLEX CURTAIN WALL 300ml**

QUANTITY \_\_\_\_\_  
 unit \_\_\_\_\_  
 12 units box \_\_\_\_\_

- WHITE 
- TRANSPARENT 
- GREY 9006 
- BLACK 
- GREEN 
- GREY 7004 
- GREY 7011 
- GREY 7016 
- BROWN 

**BOSTIK MAMUT GLUE 290ml**

QUANTITY \_\_\_\_\_  
 unit \_\_\_\_\_  
 12 units box \_\_\_\_\_

- WHITE 



**BOSTIK P300 FOAM'N'FILL B3 MANUAL 750ml**

QUANTITY \_\_\_\_\_  
 unit \_\_\_\_\_  
 12 units box \_\_\_\_\_

- YELLOW 



**BOSTIK P300 FOAM'N'FILL B3 FOR GUNFOAM 750ml**

QUANTITY \_\_\_\_\_  
 unit \_\_\_\_\_  
 12 units box \_\_\_\_\_

- YELLOW 







**BOSTIK PU FOAM EXTRA MANUAL - 750ml**

QUANTITY \_\_\_\_\_  
 unit \_\_\_\_\_  
 12 units box \_\_\_\_\_

TILE



**BOSTIK PU GUNFOAM TILE FOR APPLICATOR - 750ml**

QUANTITY \_\_\_\_\_  
 unit \_\_\_\_\_  
 12 units box \_\_\_\_\_

TILE



**BOSTIK GUNFOAM T620 FOAM'N'FILL PU-GUN**

QUANTITY \_\_\_\_\_  
 unit \_\_\_\_\_  
 6 units box \_\_\_\_\_

**BOSTIK WATERPROOFING LIQUID SCREEN**

QUANTITY \_\_\_\_\_  
 1 Kg | 6 units box \_\_\_\_\_  
 5Kg | 2 units box \_\_\_\_\_  
 21Kg | 1 unit \_\_\_\_\_



**BOSTIK HAND WASH PASTE**

QUANTITY \_\_\_\_\_  
 1 lt \_\_\_\_\_  
 4 lt \_\_\_\_\_  
 10 lt \_\_\_\_\_



**DEN BRAVEN MULTI-LUBE LUBRICANT SPRAY 6 IN 1 - 400 ml**

QUANTITY \_\_\_\_\_  
 12 units box \_\_\_\_\_





**SUPER COLOR ACRYLIC SPRAY - 400 ml**

QUANTITY

6 units box

AVAILABLE COLOURS

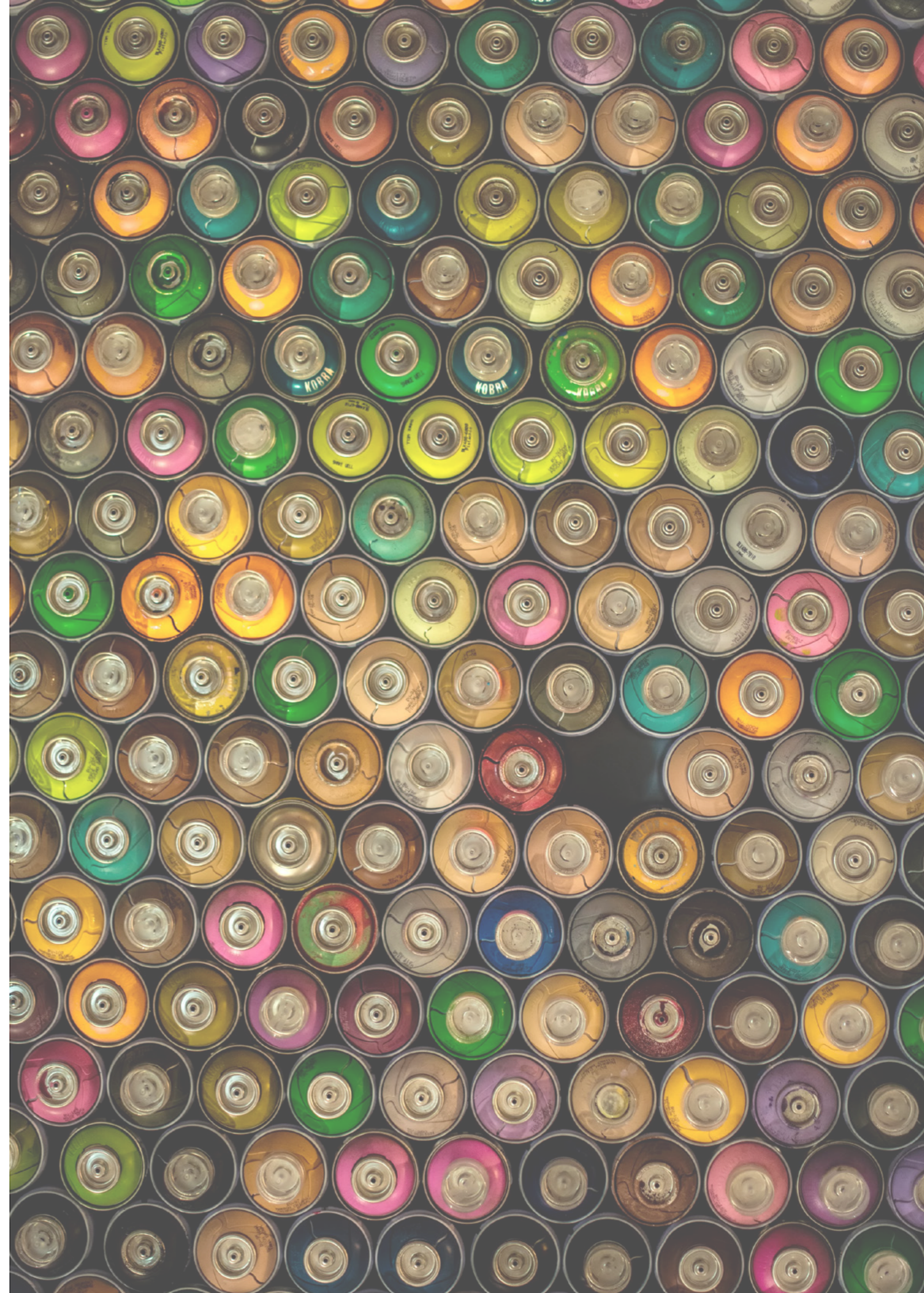


**GUTTAL COLOR TUNED SPRAY**

QUANTITY

unit

6 units box



# QUALITY POLICY E GENERAL SALES CONDITIONS

## QUALITY POLICY

Guttal assumes quality as a key factor in the company culture and understands that its management orientation is based on a spirit of continuous improvement, covering all areas and work processes within the organisation.

Based on its commitment to quality, Guttal aims at the satisfaction of its customers, continuously improving its internal processes and seeking to know and understand the current and future needs of the various interested parties, fully meeting their expectations.

In this sense, Guttal's activity focuses on the following drives:

- Promoting customer satisfaction and loyalty;
- Striving for excellence, investing in the improvement of the products/services sold as well as in the adoption of the best business practices;
- To continuously improve the company's performance, by improving the product/service and its quality/price ratio, never neglecting to satisfy the needs and expectations of our customers;
- To provide our employees with professional fulfilment, satisfaction and motivation, promoting good relations between employees, valuing training and continuous assessment and respecting their rights, with the aim of achieving individual and collective targets and objectives;
- To respect the principles of economic, social and environmental development, promoting a conduct of conscious use of natural resources and prevention of pollution, as well as the management of interested parties in the various areas (suppliers, employees, customers, among others);
- Comply with all applicable legal, regulatory and normative requirements.

It is the duty of all employees to practice a socially responsible conduct which meets the above mentioned objectives, ensuring quality management and consequently the sustainable growth and success of Guttal.



FUTURE FACILITIES

A stylized, handwritten signature in black ink, positioned above a horizontal line.

MANAGEMENT

# GENERAL SALES CONDITIONS

## 1. GENERAL PROVISION

- 1.1 Any order placed by the customer will be governed exclusively by the provisions of these general conditions and the particular ones eventually subscribed between the parties, except for the provided for in the following paragraph. The placing of an order by the customer implies unreserved acceptance by the customer of the present terms and conditions of sale. The general purchasing conditions that the customer usually applies within the scope of its activity will not apply, unless these conditions are expressly accepted in writing by Pedro Sendim, Lda.

## 2. ORDERS

- 2.1 You can place your order in the following ways:
- 2.1.1 With your commercial manager (email or telephone);
- 2.1.2 Phone - +351 253 674 309;
- 2.1.3 Email - encomendas@guttal.pt;
- 2.2 You may also place your order at our facilities, directly at the counter.
- 2.3 All orders are subject to confirmation of stock availability.

## 3. DELIVERY

- 3.1 Delivery shall be deemed to have taken place upon loading of the materials at our warehouse, through the signature of the corresponding delivery note by the customer/transporter.
- 3.2 The risk of loss and/or damages is transmitted to the customer since the referred moment, except in the case the transport has been hired by Pedro Sendim, Lda. in which case the transmission of said risk to the customer takes place in the delivery address previously indicated by the customer at the moment of delivery.
- 3.3 In the case of international orders, the delivery conditions will be ruled by the INCOTERMS 2020.
- 3.4 All the materials supplied by Pedro Sendim, Lda. should be reviewed and examined by the customer at the moment of delivery as described in point 3.1.
- 3.5 The dimensions, colours and weight of certain materials subject to variations that are inherent to its nature or manufacture process will have the usual tolerances. The samples supplied will be considered as type-samples. Pedro Sendim, Lda. does not guarantee the exact correspondence of the samples with the goods delivered.
- 3.6 The supplied materials will be considered accepted by the customer, in relation to what is indicated in the order, if in a period of 48 hours, counting from the delivery described in point 3.1, the customer does not expressly state otherwise.
- 3.7 After the referred period, Pedro Sendim, Lda. will not admit any complaint about the quality or quantity, nor will be obliged to do so.
- 3.8 The delivery dates provided are merely indicative and eventual delays in delivery do not give the customer the right to cancel the order, refuse the merchandise or claim for damages or losses.

## 4. TRANSPORT

- 4.1 Our deliveries are made via carrier, with an estimated delivery time of 24h or until 8pm of the day after the order has been accepted (time limit for deliveries by the carrier), for mainland Portugal.
- 4.2 Orders requested until 3pm will be guaranteed to be dispatched on the same day, except when there are items out of stock or in the case of specific orders.
- 4.3 The expenses caused by the return of goods or their redelivery will be charged to the customer when the customer is accountable for it.

- 4.4 For deliveries outside mainland Portugal, please consult us.
- 4.5 In case of international orders, liability for materials and transport costs will be governed by INCOTERMS 2020.

## 5. DEVOLUTIONS AND CLAIMS

- 5.1 In any case, Pedro Sendim, Lda's responsibility for the supplied materials which are proved to be defective will be limited, only and exclusively, to the replacement of the material which effectively proves to be in a bad condition. In this sense, Pedro Sendim, Lda. will proceed to the replacement of the material as soon as this circumstance is accredited.
- 5.2 In no case the previous paragraph will be applied, if the customer does not have its payments to Pedro Sendim, Lda. in order, renouncing expressly, in this case, to any replacement of defective material. The customer renounces, expressly and irrevocably, to claim from Pedro Sendim, Lda. other damages and losses which for any other reason, emergent damage or ceasing profit, may occur as a consequence of the supply of defective material.
- 5.3 In no case will be admitted returns of products which condition is not fit for sale.
- 5.4 Returns or claims relative to delivery notes that have not been duly signed and stamped by the customer upon receipt will not be accepted.
- 5.5 Pedro Sendim, Lda. will not admit returns or complaints of supplied products after 30 days from the delivery date.
- 5.6 Any request of return or complaint should be sent to Pedro Sendim, Lda. in writing, within the period mentioned in point 5.5 and should contain, at least, the following information:
- Number of the delivery note or purchase invoice;
  - Product reference number (item number and batch number);
  - Number of units to be returned;
  - Reasons for the return.
- 5.7 Pedro Sendim, Lda. may choose to inspect the products to be returned where the customer has them stored, in which case the customer should facilitate the access and provide all the collaboration that may be necessary in order to proceed to the referred inspection, or request that the products are sent to Pedro Sendim, Lda.'s facilities for inspection.
- 5.8 Once the customer's claim is accepted, Pedro Sendim, Lda. will proceed, as soon as possible, to the replacement of the products. The customer will not be entitled, for this reason, to terminate the contract or to return non-defective products that may have been supplied with defective ones.
- 5.9 Accepted returns of products that are not defective and, therefore, are of the customer's choice and exclusive responsibility, will have a 10% reduction on the sale price to cover the cost of receiving, re-packaging and re-stocking.
- 5.10 Transportation costs incurred as a result of the return of the goods will, in all cases, be borne by the customer, except if the return is due to a defect of the merchandise and such has been recognized by the quality department of Pedro Sendim, Lda.

## 6. SPECIAL ORDERS

- 6.1 All orders that have been manufactured or whose manufacture has been started expressly for a customer, according to the technical specifications provided by the latter, will be considered as special orders and, therefore, neither their cancellation by the customer nor their subsequent return will be accepted except in the case of defects in the intrinsic quality of the product.

- 6.2 The supply of special services and the manufacture of customised items requires that the order made in writing with the maximum detail possible, in order to avoid interpretation mistakes. In case of doubt about some information, Pedro Sendim, Lda. reserves the right to hold the manufacturing process until the customer clarifies the doubts in question.
- 6.3 Pedro Sendim, Lda. reserves the right of not executing a special order in case it is not received as described above and that the information in it is not clear and unequivocal.

## **7. PRICES**

- 7.1 Prices are quoted in Euros.
- 7.2 Prices are for materials located at our factory and warehouse. This does not include the cost of transporting the materials to the place of delivery.
- 7.3 Orders submitted by the customer for which the prices and conditions differ from those agreed upon commercially need previous approval by Pedro Sendim, Lda.
- 7.4 The price list applied will be according to the date of order acceptance.
- 7.5 In this catalogue / price list, the materials designated as existing in standard measures and lengths will maintain this condition only while the same are available in stock. In case of non-availability in stock of a "standard" material, the customer may choose to cut the desired measure, bearing the costs inherent to the operation (cut and waste).

## **8. INVOICING AND PAYMENT**

- 8.1 The goods may be invoiced from the moment of dispatch under the conditions and due dates agreed upon when ordering and which are indicated in the invoice.
- 8.2 Pedro Sendim, Lda. offers to its customers varied and flexible payment conditions.
- 8.3 The credit concession will only be effective after approved by our credit insurance company and will always be based on an analysis of all commercial and financial data which will be previously requested to the customer.
- 8.4 Failure to meet payment deadlines shall result in the issue of an invoice with the amount corresponding to eventual early payment discounts given.
- 8.5 In the event of non-payment of any invoice on its due date regardless of the actions to which they may give rise, the customer must pay the amount due plus the interest corresponding to the days of delay, calculated at the legal interest rate plus up to 7 points (700 basis points) and all the expenses originated by the referred non-fulfilment. Moreover, Pedro Sendim, Lda. will immediately suspend the pending shipments while the payment is not made.
- 8.6 Accepted payment methods are:
- Cash: payment made upon delivery of the goods, in an amount inferior to 1.000€;
  - Check: payment made upon delivery of the goods, which may be dated or postdated;
  - Bank transfer: for early payment or payment within 16 or 30 days.

## **9. TAXES**

- 9.1 The prices set out in this catalogue will be increased on the invoice with the corresponding VAT or taxes in force at the time.
- 9.2 International orders will be exempt from the application of VAT, in the cases provided for under the CIVA.

## **10. USE OF THE SUPPLIED MATERIALS**

- 10.1 The materials supplied by Pedro Sendim, Lda. may only be used for the purpose they are destined to. In particular, Pedro Sendim, Lda. may not, in any case, be held responsible for damages and/or losses (material or personal) which may arise from an incorrect, illicit or improper use of the materials and packing supplied, as well as for any defective condition that may occur due to bad storage or improper handling.

## **11. STORAGE AND HANDLING**

- 11.1 It is the responsibility of the customer to ensure proper storage and handling of the material from the moment it is unloaded/delivered.
- 11.2 All information in this regard is available to the customer in the technical specifications of each product.

## **12. ENVIRONMENT**

- 12.1 All our products comply with specific quality standards.
- 12.2 Packaging supplied is recyclable. By virtue of the provisions of REACH n 1907/2006 of 18 December 2016, the final holder of the product and packaging, considered as waste(s), is responsible for its correct environmental management.

## **13. SPECIAL CONDITIONS**

- 13.1 Modifications to these general sales conditions will only be valid if they are mutually agreed upon and always in writing.

## **14. APPLICABLE LAW AND JURISDICTION**

- 14.1 These general terms of sale shall be interpreted and governed in accordance with Portuguese Law.
- 14.2 For all and any litigation, claim or emergent questions resulting from the execution or interpretation of the present general sales conditions, Pedro Sendim, Lda. and the customer elect, with express renounce to any other, the District Court of Braga.

2022

January	February	March	April	May	June
S M T W T F S F 2 3 4 5 6 7 8 9 10 11 12 13 14 15 16 17 18 19 20 21 22 23 24 25 26 27 28 29 30 31	S M T W T F S 1 2 3 4 5 6 7 8 9 10 11 12 13 14 15 16 17 18 19 20 21 22 23 24 25 26 27 28	S M T W T F S F 2 3 4 5 6 7 8 9 10 11 12 13 14 15 16 17 18 19 20 21 22 23 24 25 26 27 28 29 30 31	S M T W T F S 1 2 3 4 5 6 7 8 9 10 11 12 13 14 F 16 F 18 19 20 21 22 23 24 F 26 27 28 29 30 29 30 31	S M T W T F S F 2 3 4 5 6 7 8 9 10 11 12 13 14 15 16 17 18 19 20 21 22 23 24 25 26 27 28 29 30 31	S M T W T F S 1 2 3 4 5 6 7 8 9 F 11 12 13 14 15 F 17 18 19 20 21 22 23 F 25 26 27 28 29 30
July	August	September	October	November	December
S M T W T F S 1 2 3 4 5 6 7 8 9 10 11 12 13 14 15 16 17 18 19 20 21 22 23 24 25 26 27 28 29 30 31	S M T W T F S 1 2 3 4 5 6 7 8 9 10 11 12 13 14 F 16 17 18 19 20 21 22 23 24 25 26 27 28 29 30 31	S M T W T F S 1 2 3 4 5 6 7 8 9 10 11 12 13 14 15 16 17 18 19 20 21 22 23 24 25 26 27 28 29 30	S M T W T F S 1 2 3 4 F 6 7 8 9 10 11 12 13 14 15 16 17 18 19 20 21 22 23 24 25 26 27 28 29 30 31	S M T W T F S F 2 3 4 5 6 7 8 9 10 11 12 13 14 15 16 17 18 19 20 21 22 23 24 25 26 27 28 29 30	S M T W T F S F 2 3 4 5 6 7 F 9 10 11 12 13 14 15 16 17 18 19 20 21 22 23 F F 26 27 28 29 30 31

2023

January	February	March	April	May	June
S M T W T F S F 2 3 4 5 6 7 8 9 10 11 12 13 14 15 16 17 18 19 20 21 22 23 24 25 26 27 28 29 30 31	S M T W T F S 1 2 1 2 3 4 5 6 7 8 9 10 11 12 13 14 15 16 17 18 19 20 F 22 23 24 25 26 27 28	S M T W T F S 1 2 3 4 5 6 7 8 9 10 11 12 13 14 15 16 17 18 19 20 21 22 23 24 25 26 27 28 29 30 31	S M T W T F S 1 2 3 4 5 6 F 8 F 10 11 12 13 14 15 16 17 18 19 20 21 22 23 24 F 26 27 28 29 30	S M T W T F S F 2 3 4 5 6 7 8 9 10 11 12 13 14 15 16 17 18 19 20 21 22 23 24 25 26 27 28 29 30 31	S M T W T F S 1 2 3 4 5 6 7 F 9 F 11 12 13 14 15 16 17 18 19 20 21 22 23 F 25 26 27 28 29 30
July	August	September	October	November	December
S M T W T F S 1 2 3 4 5 6 7 8 9 10 11 12 13 14 15 16 17 18 19 20 21 22 23 24 25 26 27 28 29 30 31	S M T W T F S 1 2 3 4 5 6 7 8 9 10 11 12 13 14 F 16 17 18 19 20 21 22 23 24 25 26 27 28 29 30 31	S M T W T F S 1 2 3 4 5 6 7 8 9 10 11 12 13 14 15 16 17 18 19 20 21 22 23 24 25 26 27 28 29 30	S M T W T F S F 6 7 8 9 10 11 12 13 14 15 16 17 18 19 20 21 22 23 24 25 26 27 28 29 30 31	S M T W T F S F 2 3 4 5 6 7 8 9 10 11 12 13 14 15 16 17 18 19 20 21 22 23 24 25 26 27 28 29 30	S M T W T F S F 2 3 4 5 6 7 F 9 10 11 12 13 14 15 16 17 18 19 20 21 22 23 24 F 26 27 28 29 30 31

2024

January	February	March	April	May	June
S M T W T F S F 2 3 4 5 6 7 8 9 10 11 12 13 14 15 16 17 18 19 20 21 22 23 24 25 26 27 28 29 30 31	S M T W T F S 1 2 3 4 5 6 7 8 9 10 11 12 F 14 15 16 17 18 19 20 21 22 23 24 25 26 27 28 29	S M T W T F S 1 2 3 4 5 6 7 8 9 10 11 12 13 14 15 16 17 18 19 20 21 22 23 24 25 26 27 28 F 30 F	S M T W T F S 1 2 3 4 5 6 7 8 9 10 11 12 13 14 15 16 17 18 19 20 21 22 23 24 F 26 27 28 29 30	S M T W T F S F 6 3 4 5 6 7 8 9 10 11 12 13 14 15 16 17 18 19 20 21 22 23 24 25 26 27 28 29 F 31	S M T W T F S 1 2 3 4 5 6 7 8 9 F 11 12 13 14 15 16 17 18 19 20 21 22 23 F 25 26 27 28 29 30
July	August	September	October	November	December
S M T W T F S 1 2 3 4 5 6 7 8 9 10 11 12 13 14 15 16 17 18 19 20 21 22 23 24 25 26 27 28 29 30 31	S M T W T F S 1 2 3 4 5 6 7 8 9 10 11 12 13 14 F 16 17 18 19 20 21 22 23 24 25 26 27 28 29 30 31	S M T W T F S 1 2 3 4 5 6 7 8 9 10 11 12 13 14 15 16 17 18 19 20 21 22 23 24 25 26 27 28 29 30	S M T W T F S 1 2 3 4 F 6 7 8 9 10 11 12 13 14 15 16 17 18 19 20 21 22 23 24 25 26 27 28 29 30 31	S M T W T F S F 2 3 4 5 6 7 8 9 10 11 12 13 14 15 16 17 18 19 20 21 22 23 24 25 26 27 28 29 30	S M T W T F S F 2 3 4 5 6 7 F 9 10 11 12 13 14 15 16 17 18 19 20 21 22 23 24 N 26 27 28 29 30 31



+351 253 674 309  
geral@guttal.pt

www.guttal.pt

All holidays represent days of rest at the company, as well as the day before or after if there is a possibility of a long weekend.  
24 June - Municipal holiday (S. João).

**+351 253 674 309**

**geral@guttal.pt**

**Rua Nova, nº70  
4700-565  
Mire de Tibães  
Braga - Portugal**

**Lat. - 41.579514  
Long. - 8.470824**

**www.guttal.pt**